

vão

ARQUITETURA
www.vao.arq.br

Anna Juni
Enk te Winkel
Gustavo Delonero

Portfolio

Projetos Selecionados

Rua Cetequese, 77
Butantã SP 05502-020

contato@vao.arq.br

vão

ARQUITETURA
www.vao.arq.br

Sobre

Fundado em 2013, Vão é um escritório de arquitetura e urbanismo localizado na cidade de São Paulo que opera em diversas escalas, demandas e contextos. A sua produção resulta da constante pesquisa arquitetônica, tanto teórica quanto técnica, mantida dentro do escritório e do enriquecedor contato com as artes plásticas que se realiza através de colaborações com artistas contemporâneos. Em 2014, receberam o segundo prêmio do 'Concurso Nacional Anexo BNDES' no Rio de Janeiro e em 2015 foi vencedor do 'Concurso Internacional Geométrias Invisíveis' promovido pelo espaço LIGA na Cidade do México.

Anna Juni

Nascida na cidade de São Paulo, Brasil, em 1989.
Formada pela Faculdade de Arquitetura e Urbanismo Mackenzie em 2013.

Enk te Winkel

Nascido na cidade de São Paulo, Brasil, em 1987.
Formado pela Arquitetura e Urbanismo na FAU Mackenzie em 2012.

Gustavo Delonero

Nascido na cidade de São Paulo, Brasil no ano de 1986.
Formado pela Arquitetura e Urbanismo na FAU Mackenzie em 2011.
Pós-graduado pela Escola da Cidade em 2013.



Subsolanus

Local

Cidade do México, DF - México

Ano

2015 - 2016

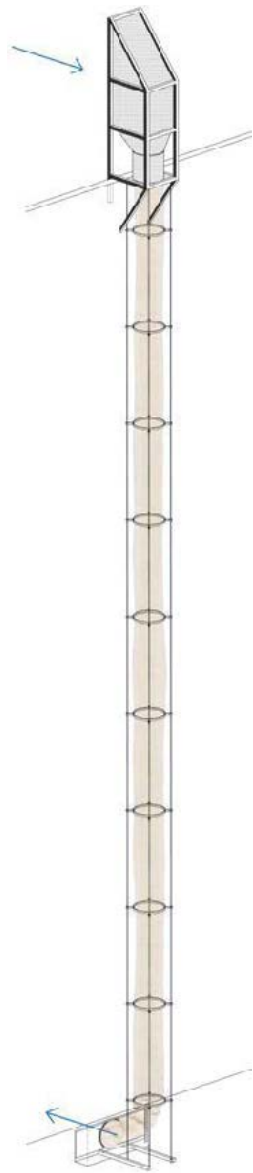
Coautoria

Marina Canhadas

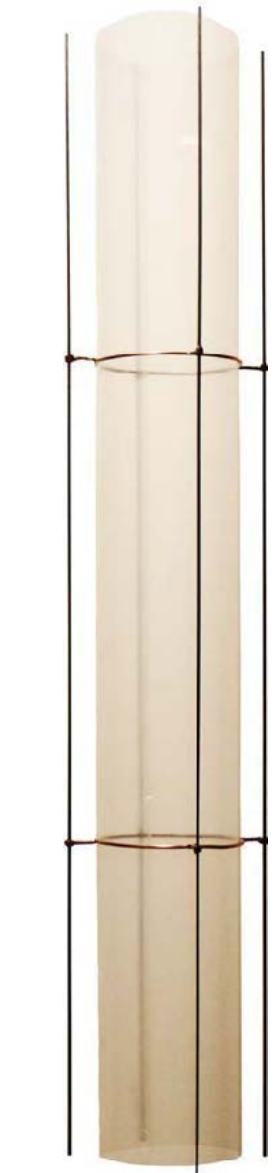
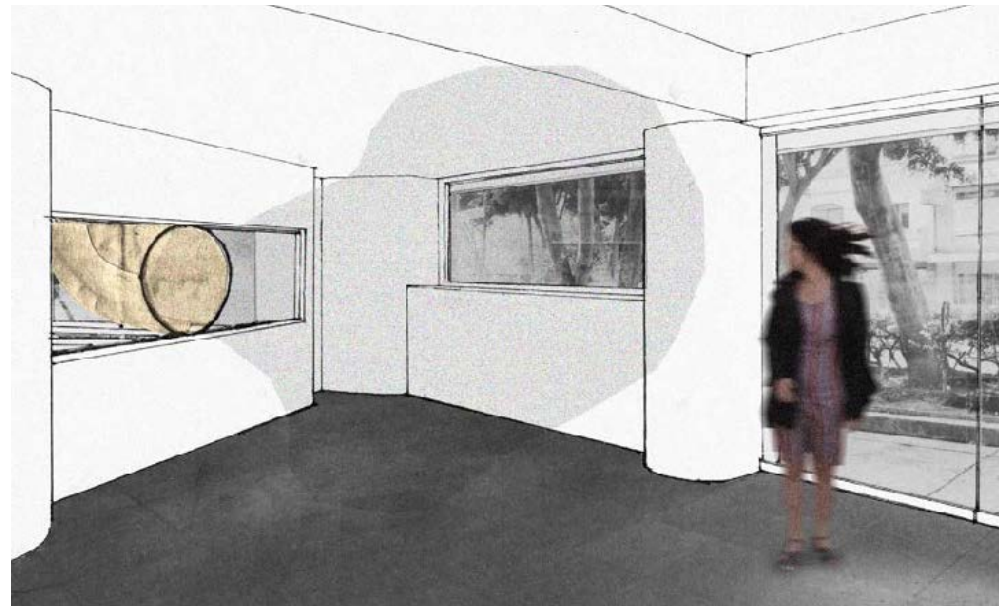
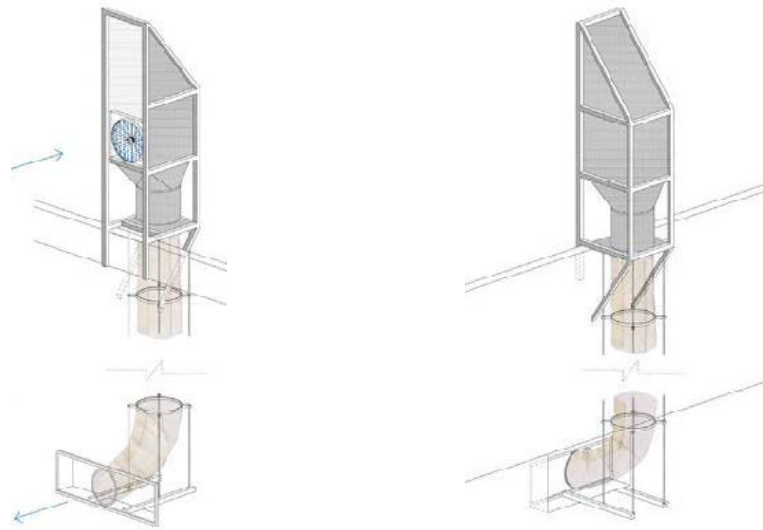
Prêmio

1º lugar

Concurso Internacional



perspectivas isométricas



maquete | cobre soldado e plástico





Anexo BNDES

Local

Rio de Janeiro, RJ - Brasil

Ano

2014

Área do terreno

4.470 m²

Área construída

35.790 m²

Coautor

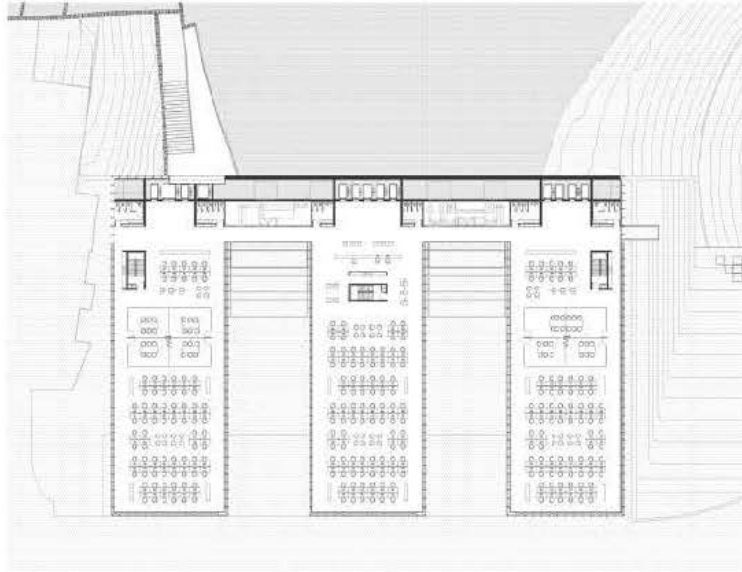
Pedro Ivo Freire

Colaboradores

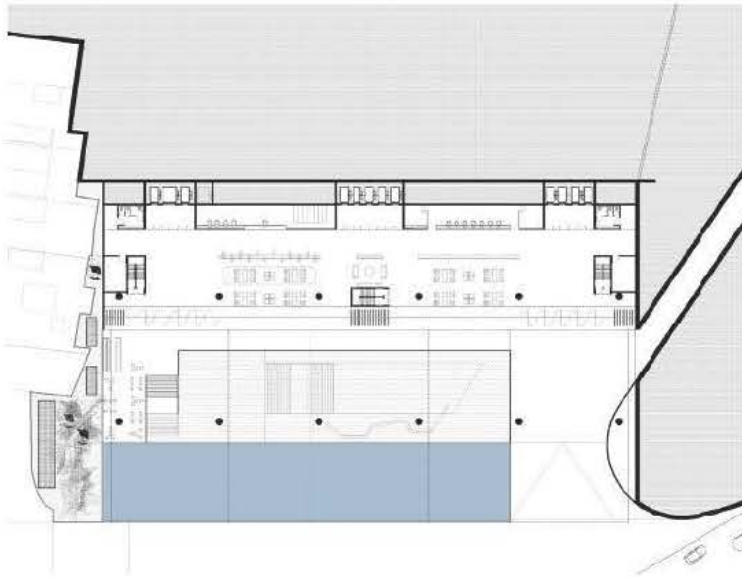
André Nunes, Florencia Mer-
guerian, João Sodré, Julia Reis,
Marina Canhadas [arquitetura];
Bruno Carnevalli [imagens 3d];
Guilherme Tanaka [maquete];
Júlia Masagão [design gráfico];
Raul Pereira Arquitetos
Associados [paisagismo];
Afaconsult [engenharias];
Ericlis Pimenta Freire e Karyn
Rodrigues [sustentabilidade]

Prêmio

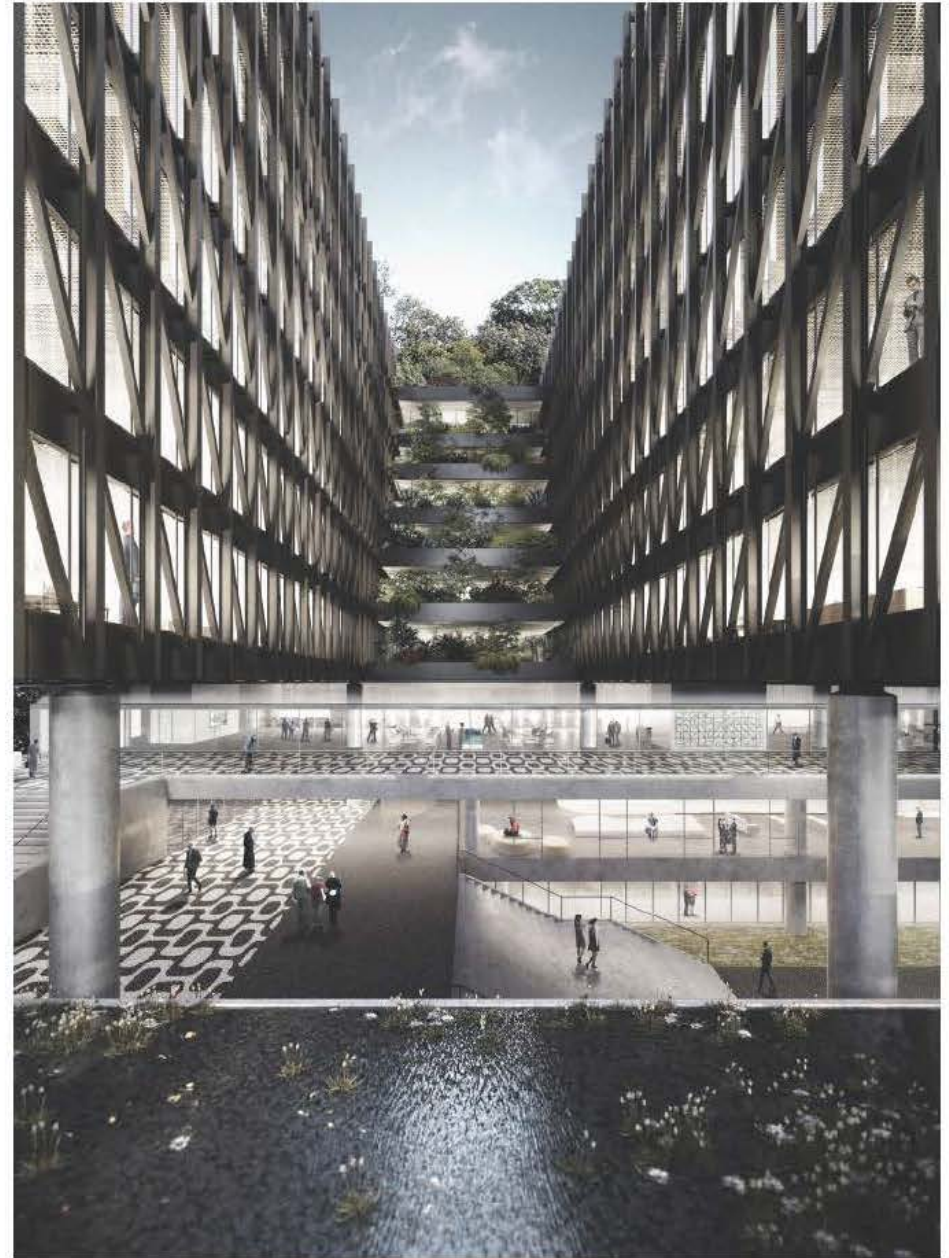
2º lugar
Concurso Nacional



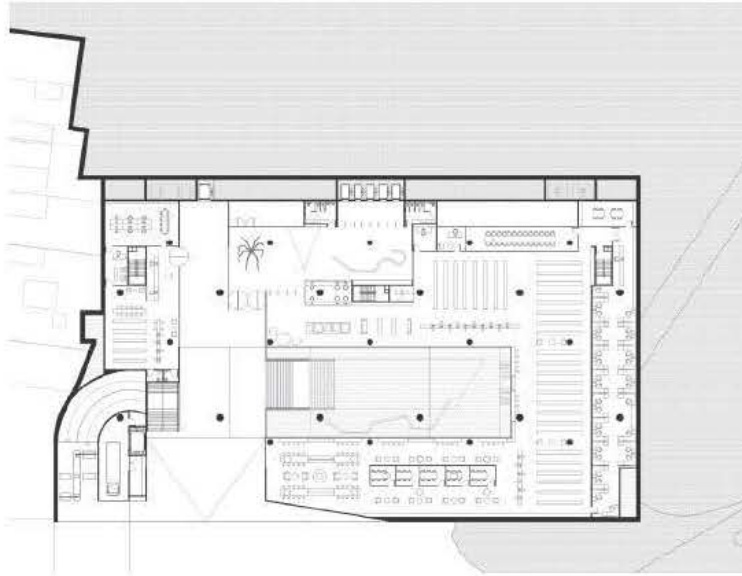
planta tipo



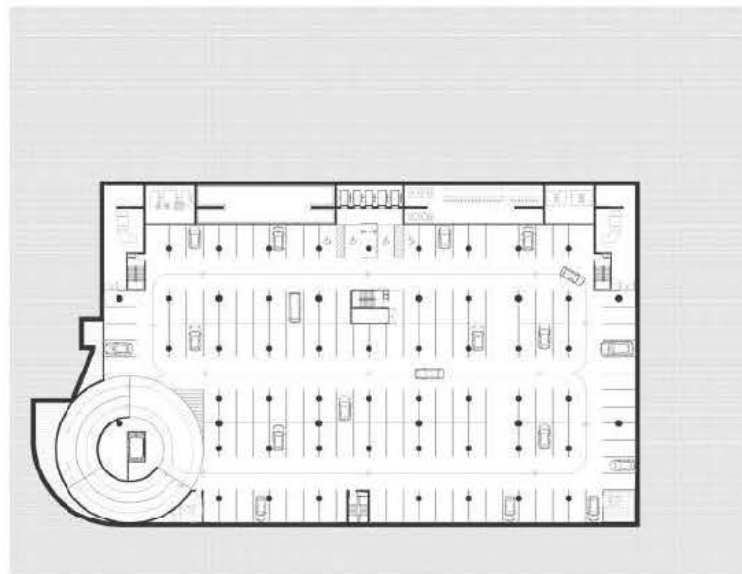
planta térreo superior





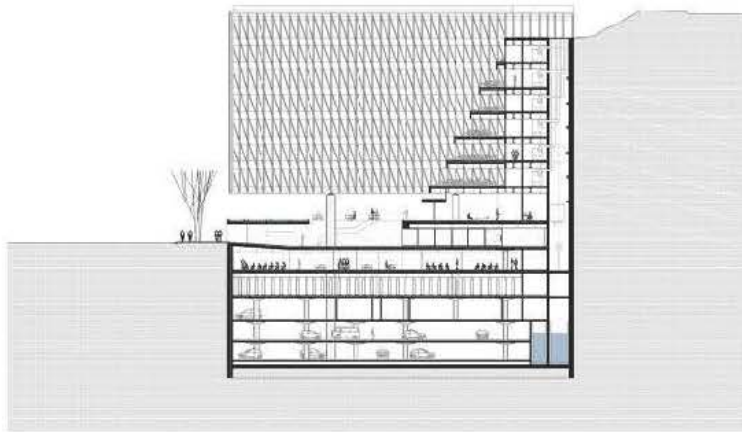


planta térreo inferior

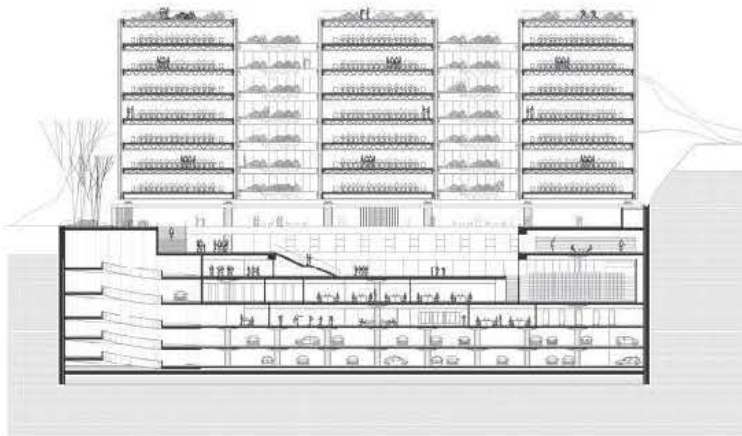


planta subsolo





corte transversal



corte longitudinal







Casa s/d nº 01

Local

Avaré, SP - Brasil

Ano

2011 -

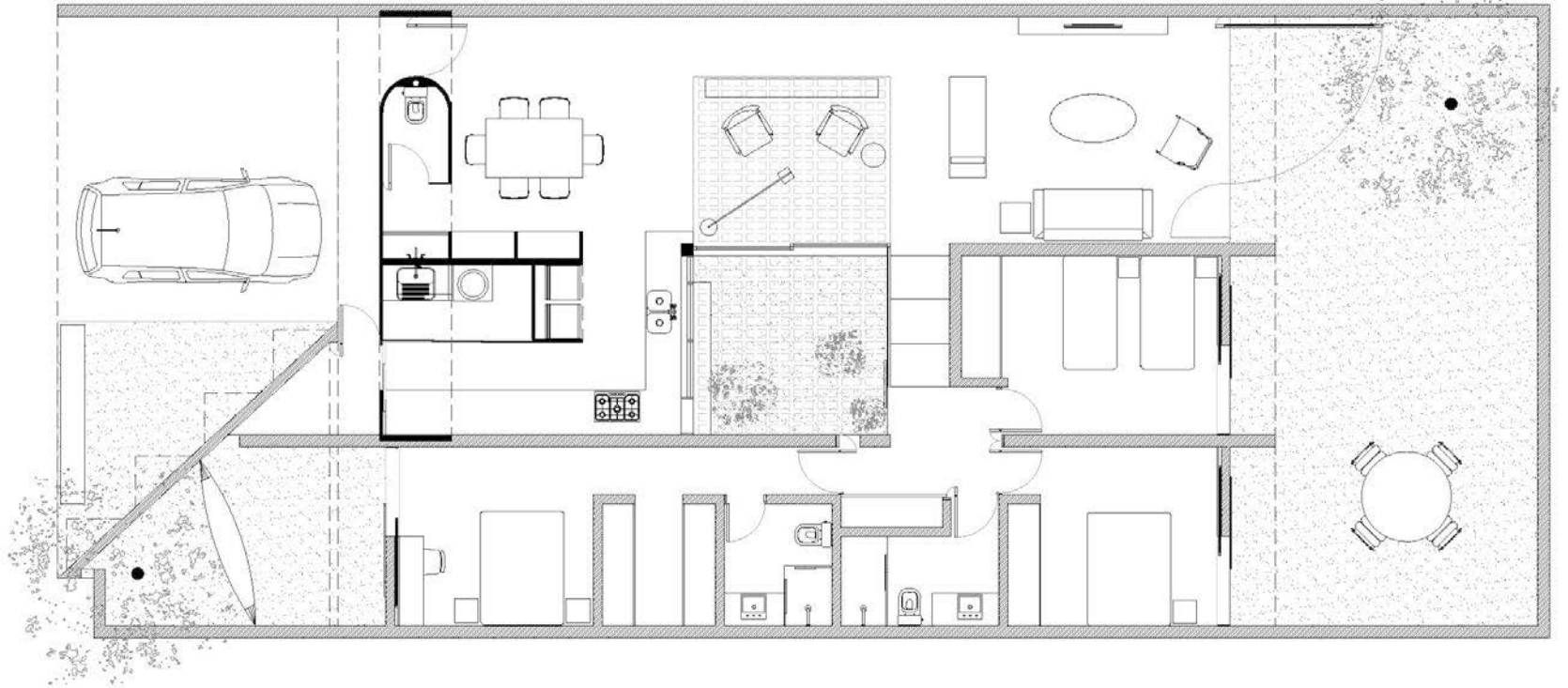
Área do terreno

265 m²

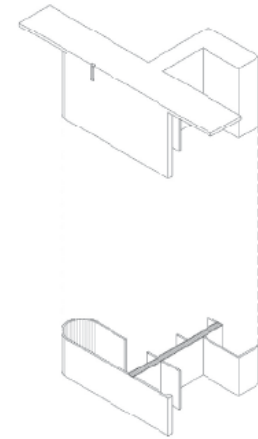
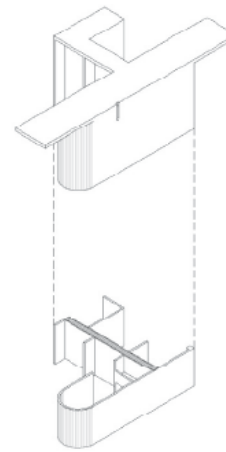
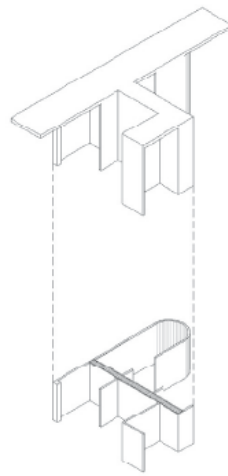
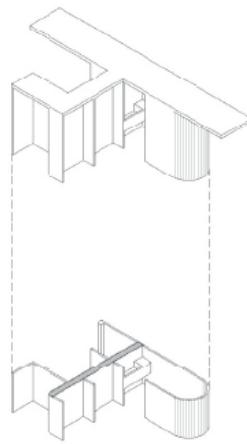
Área construída

180 m²

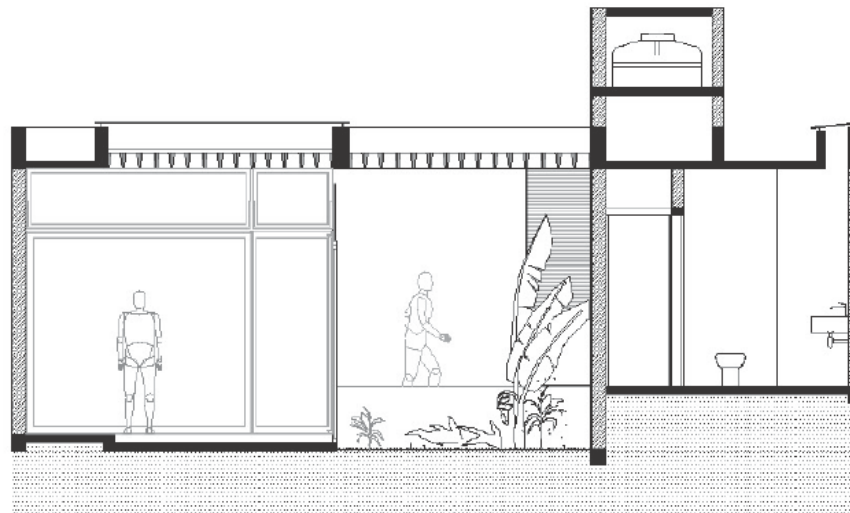




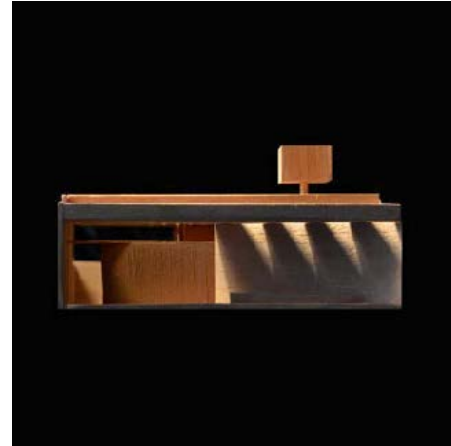
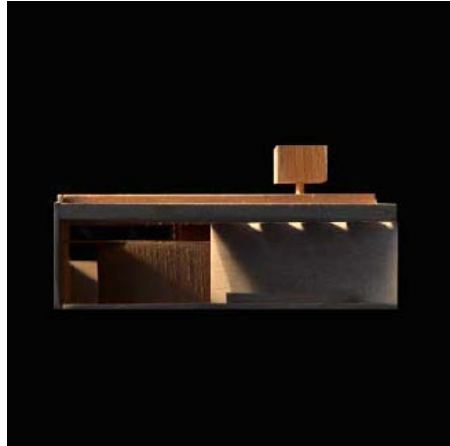
planta



núcleo de concreto



corte transversal



estudos de luz para a fachada





Casa s/d nº 02

Local

Avaré, SP - Brasil

Ano

2015 -

Área do terreno

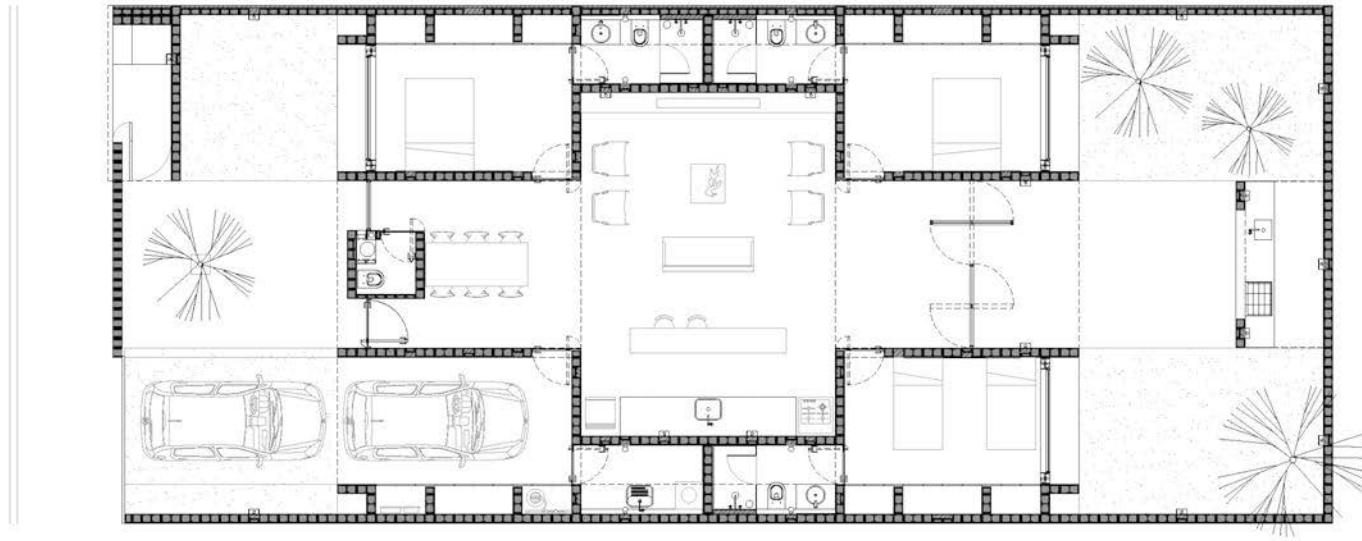
265 m²

Área construída

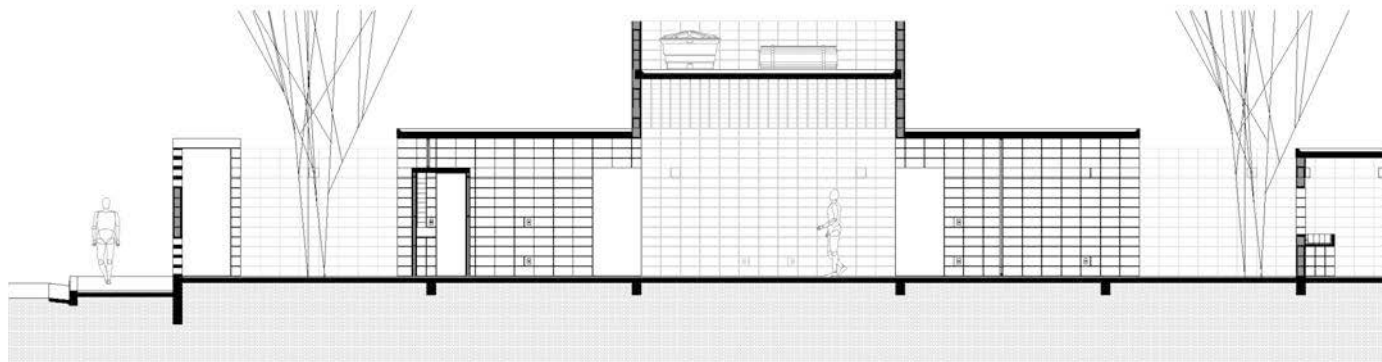
171 m²

Colaboradores

Bruno Carnevali [imagens 3d]

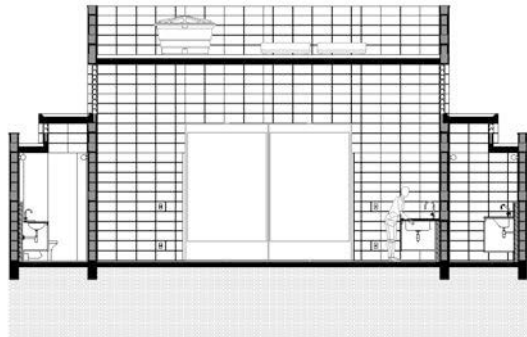
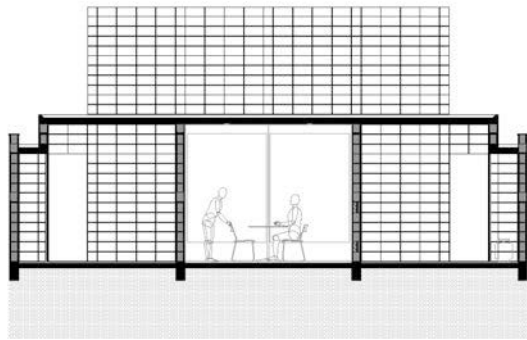


planta

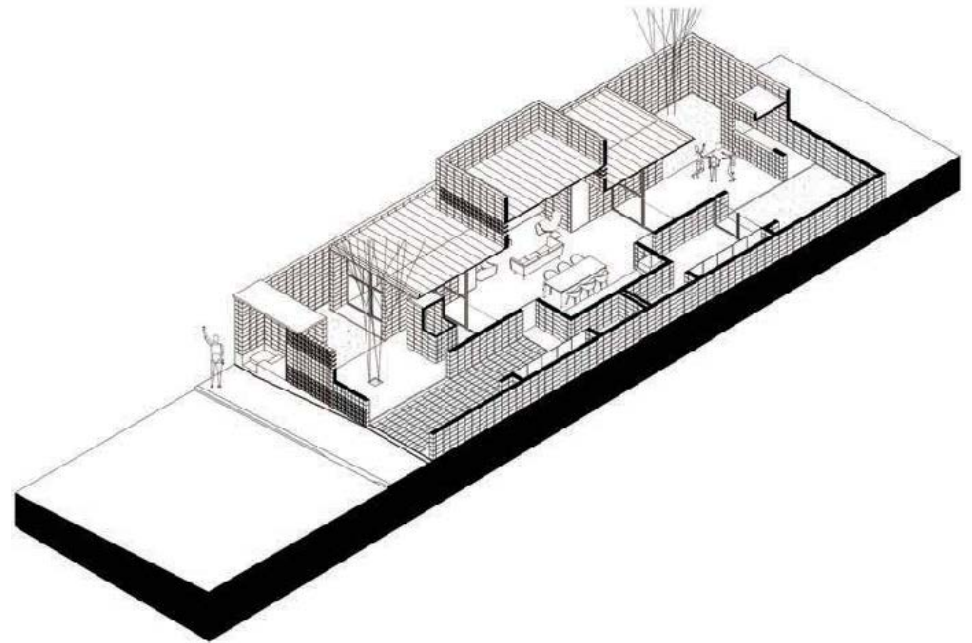


corte longitudinal





cortes transversais



perspectiva isométrica



Fazenda Alvorada

Local

Santa Cruz da Conceição,
SP - Brasil

Ano

2015

Área construída

Casa Sede: 1.000 m²
Anexo do Lago: 200 m²

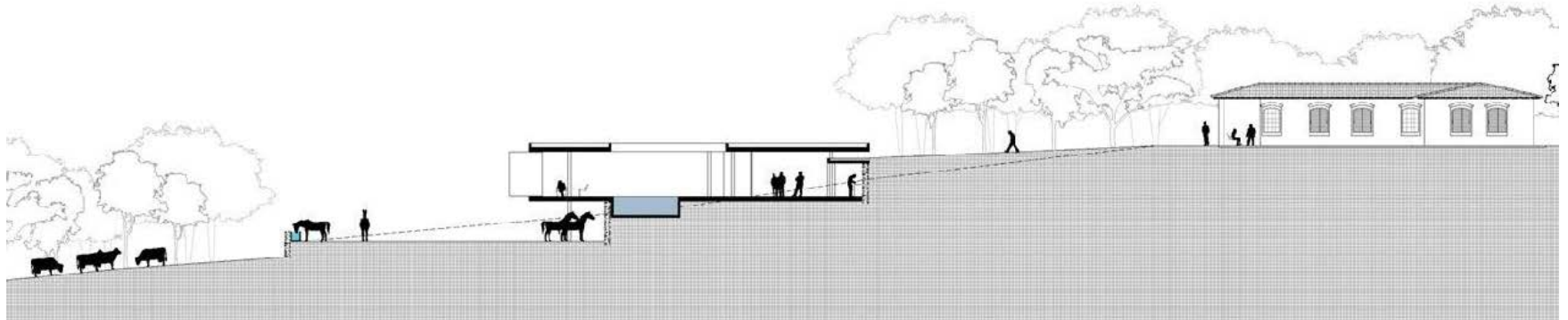
Coautoria

André Nunes
Victor Lameiro Pereira



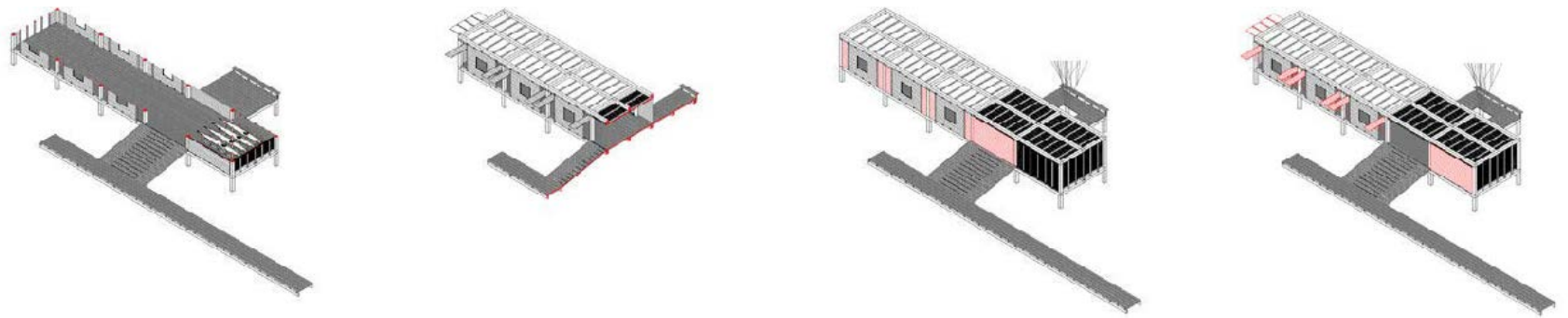


planta casa sede

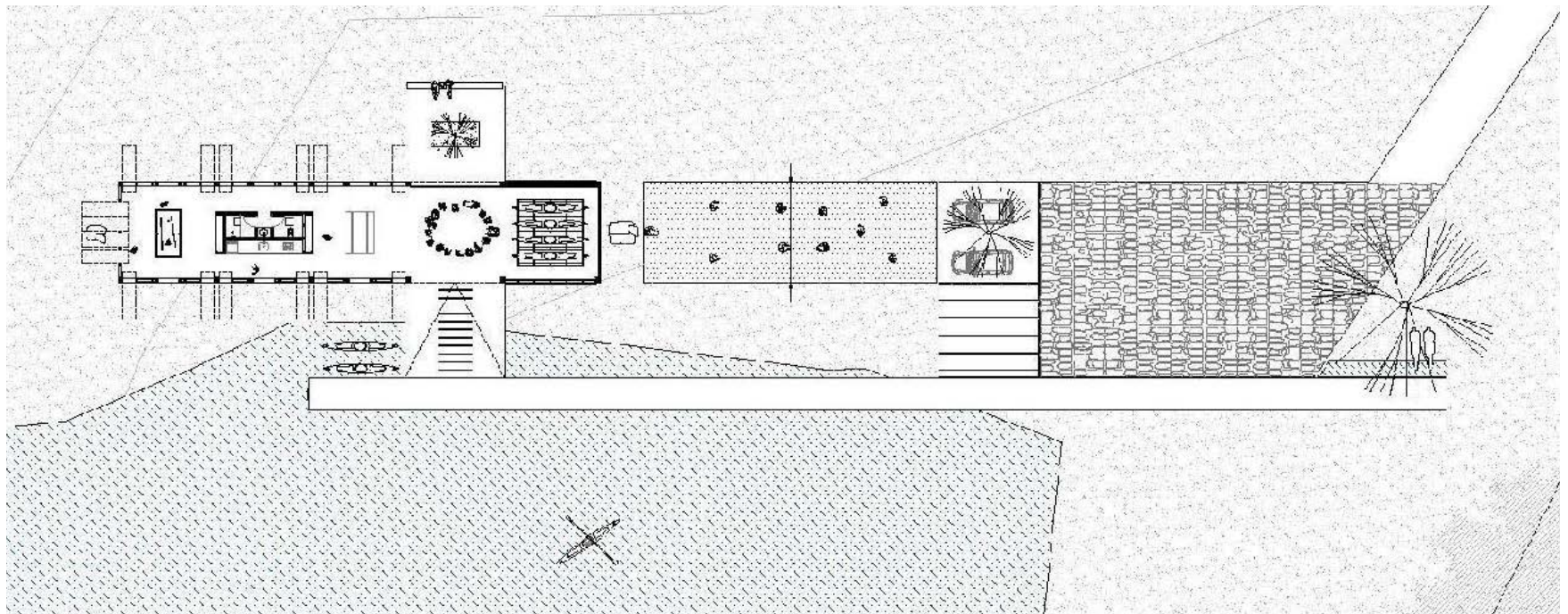


corte transversal casa sede

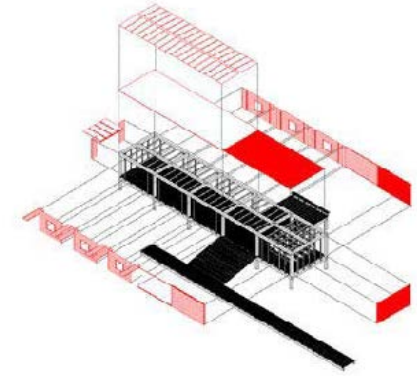
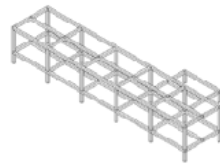




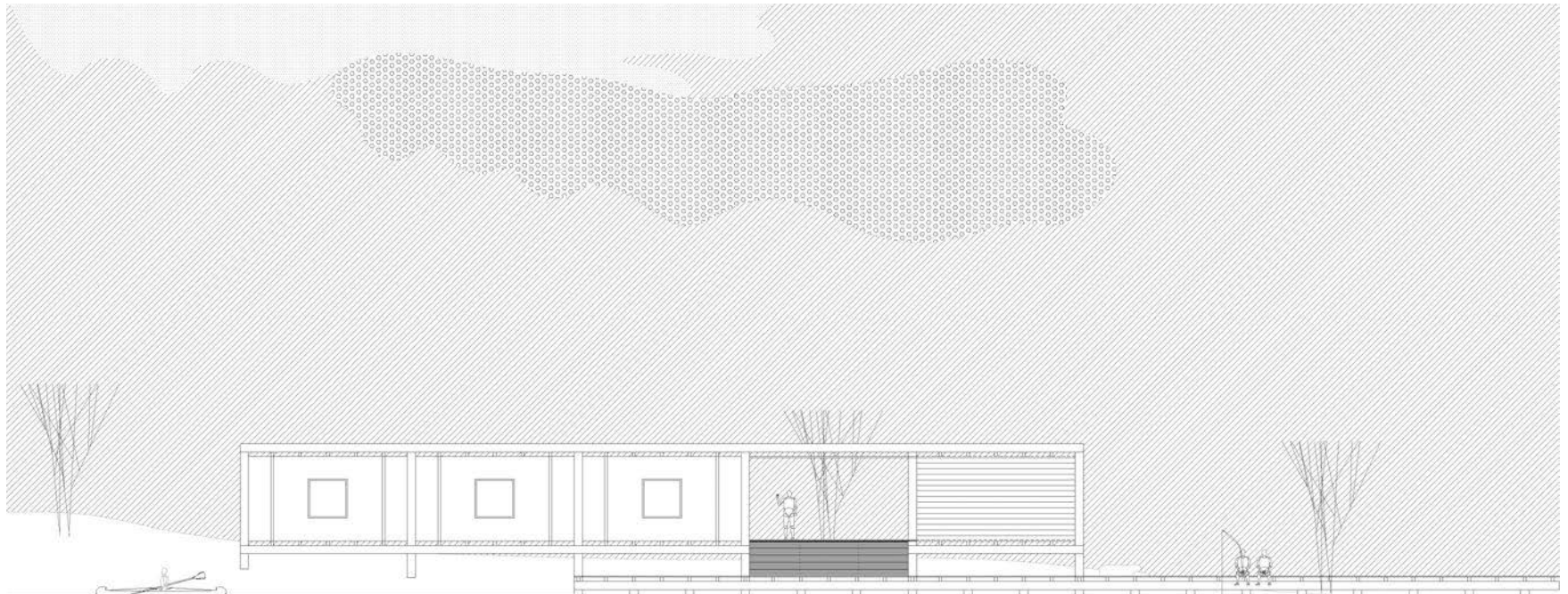
diagramas de estrutura e aberturas



planta anexo do lago



diagramas construtivos



elevação anexo do lago



Sede Fábrica de Blocos de Blocos

Local

Avaré, SP - Brasil

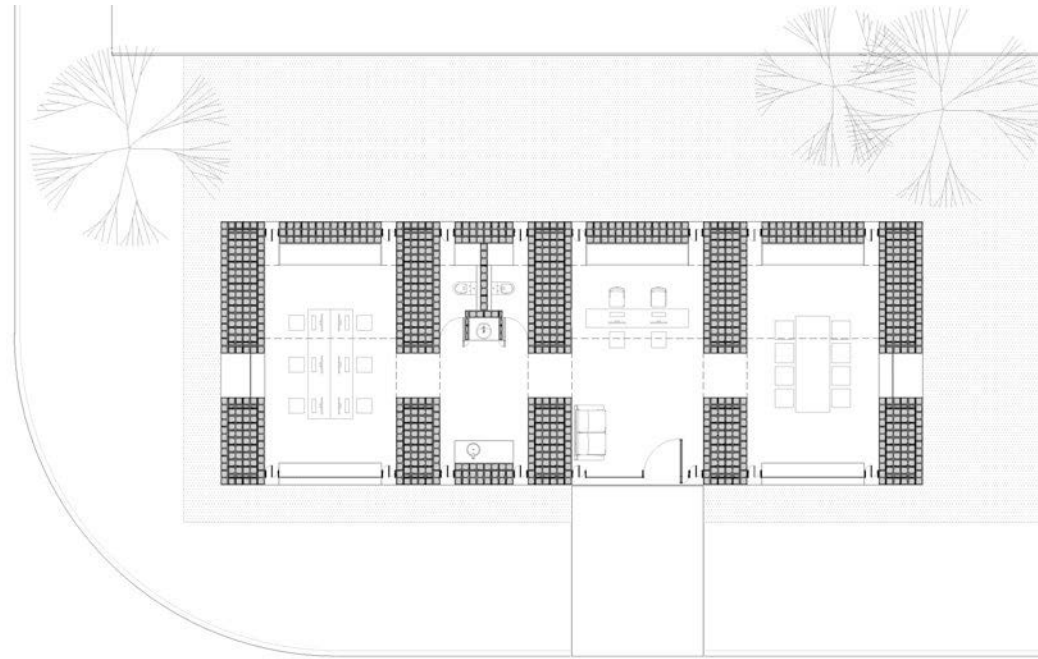
Ano

2015 -

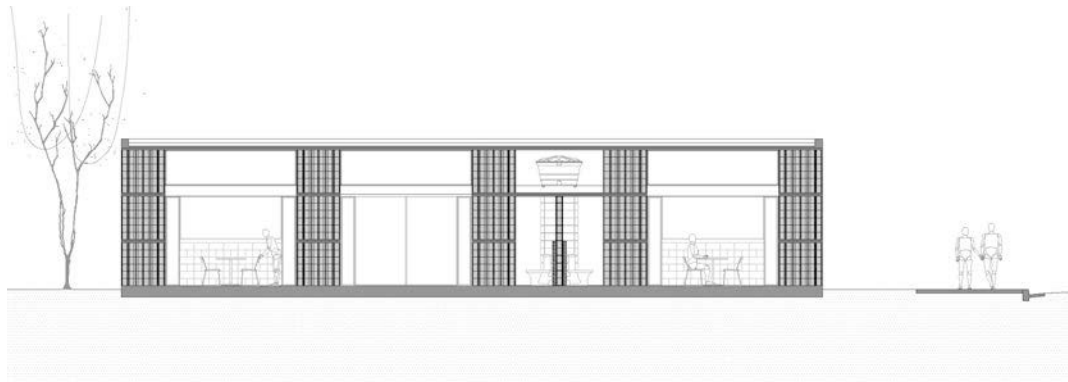
Área construída

131 m²

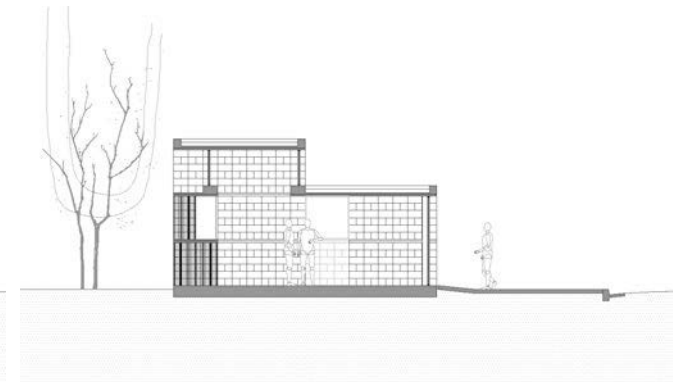




planta

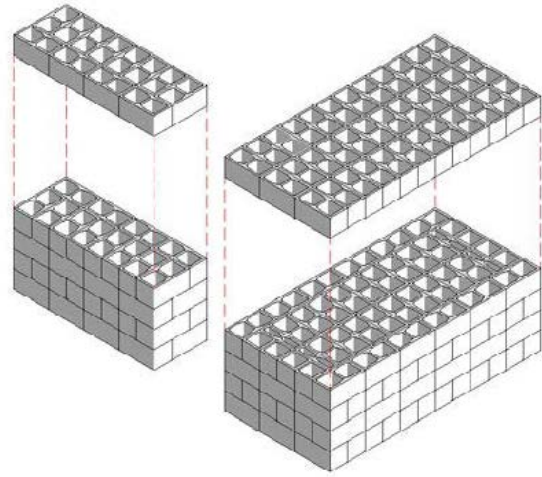


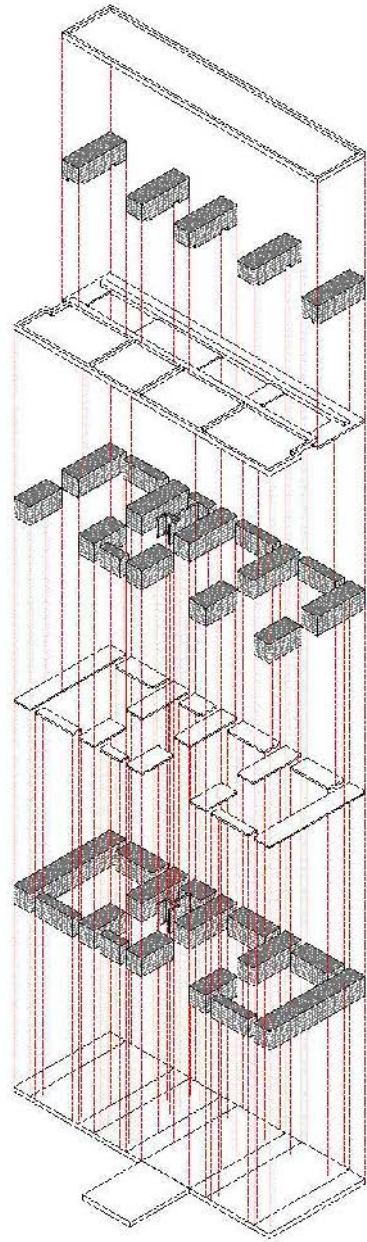
corte longitudinal



corte transversal













Edifício Praça

Local

Avaré, SP - Brasil

Ano

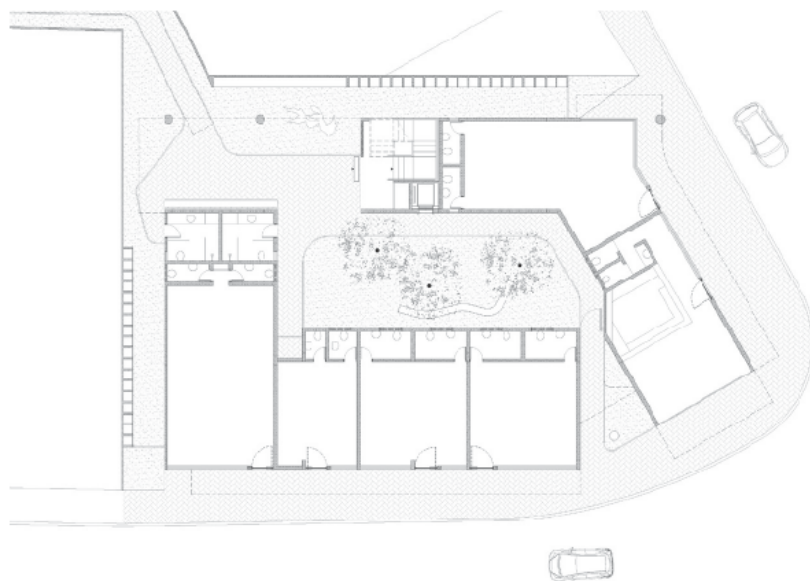
2013 -

Área do terreno

729 m²

Área construída

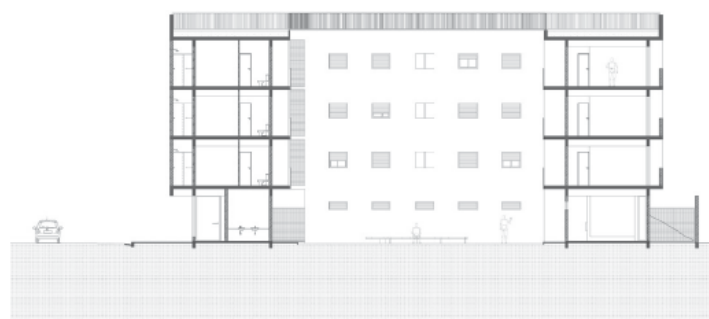
2.140 m²



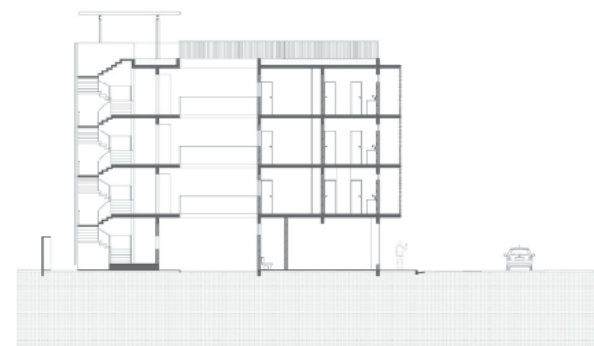
planta térreo



planta tipo



corte longitudinal



corte transversal



Edifício de Escritórios GF

Local

Avaré, SP - Brasil

Ano

2014

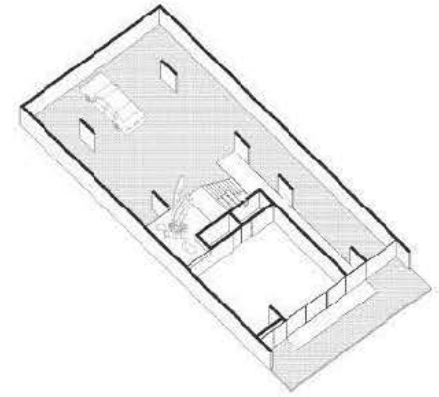
Área do terreno

300 m²

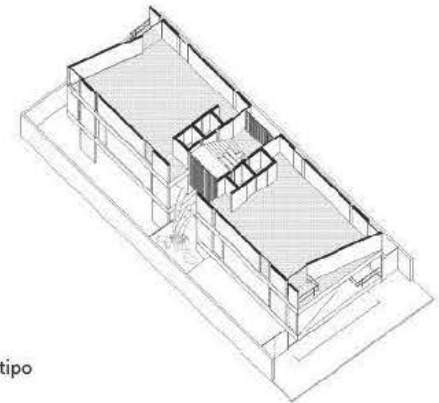
Área construída

650 m²

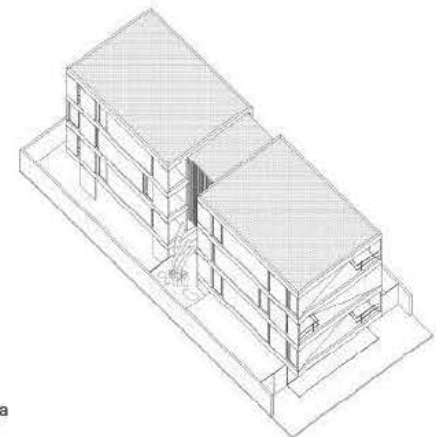




01. garagem



02. pavimento tipo



03. cobertura

Edifício Cid Ferreira

Local

Avaré, SP - Brasil

Ano

2013

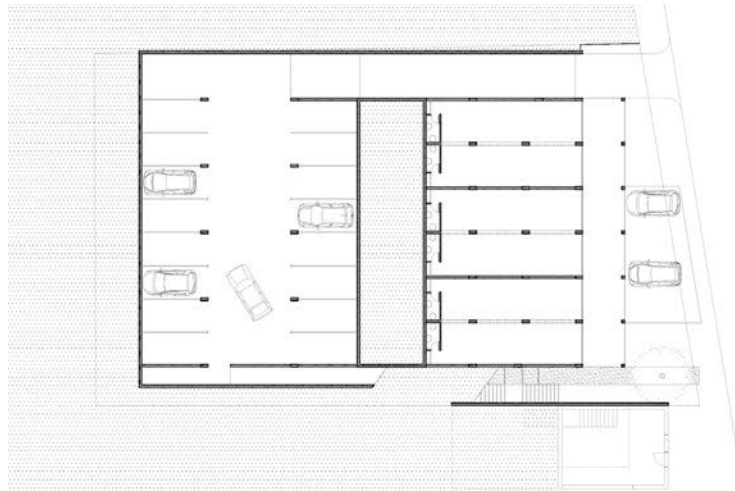
Área do terreno

943 m²

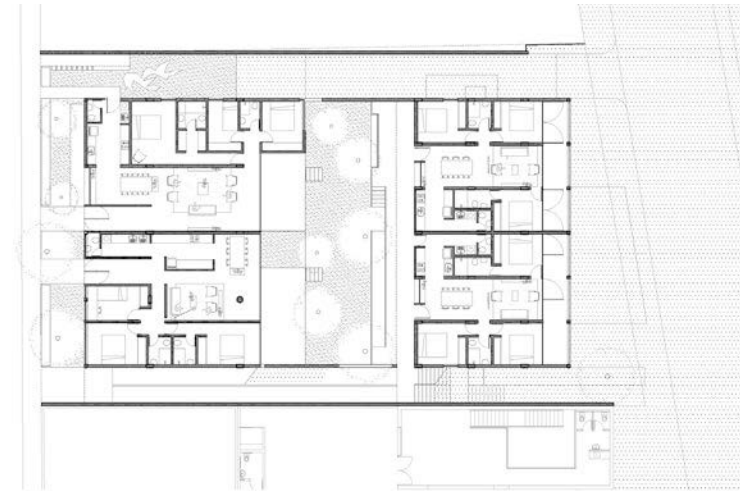
Área construída

1.490 m²



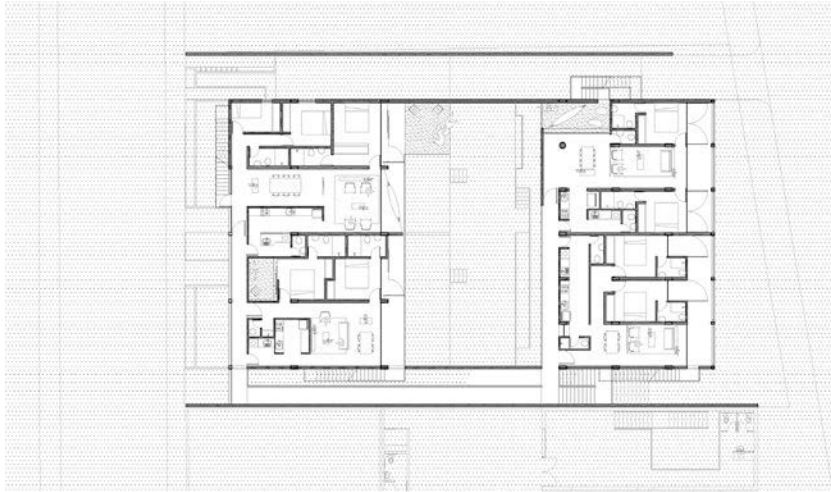


planta subsolo

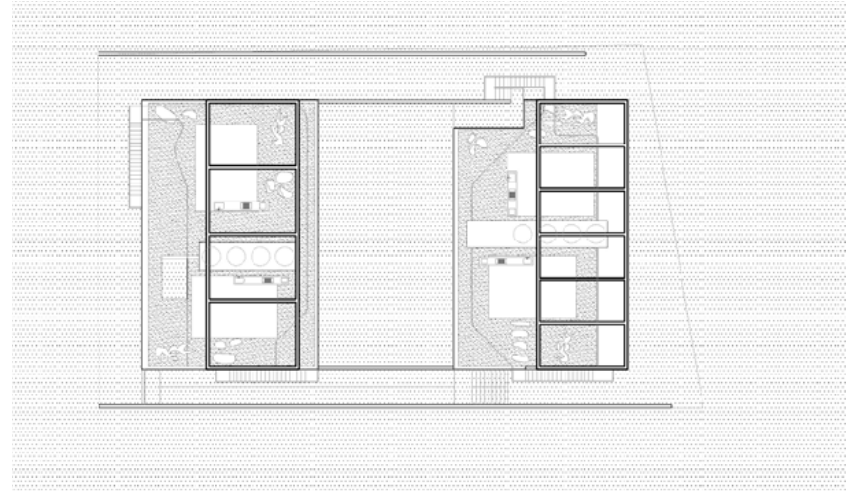


planta térreo inferior

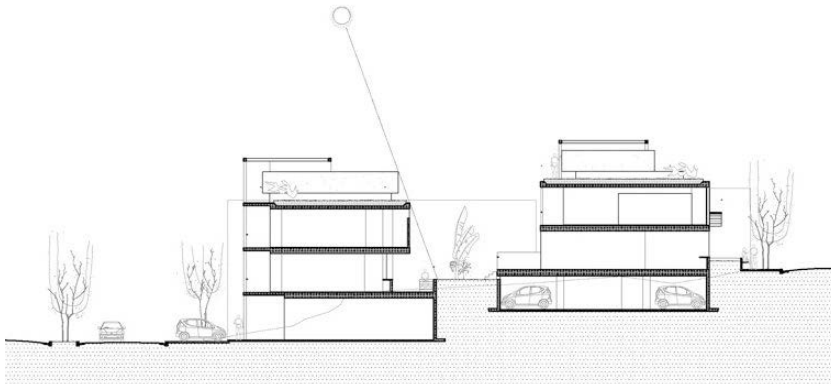




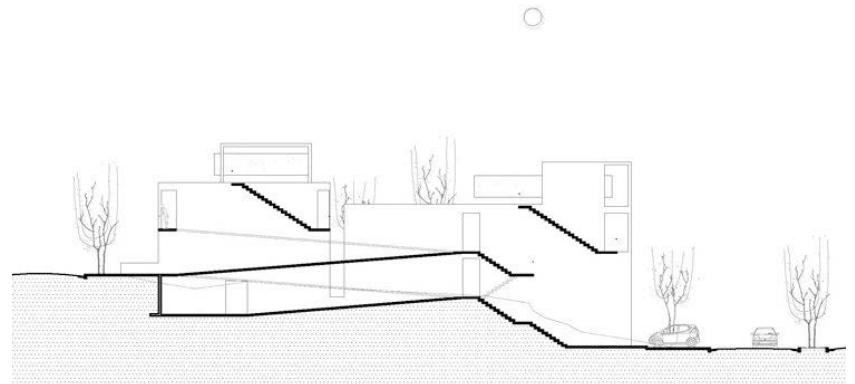
planta térreo superior



planta cobertura



corte longitudinal



corte longitudinal





Edifício Jardim Europa

Local

Avaré, SP - Brasil

Ano

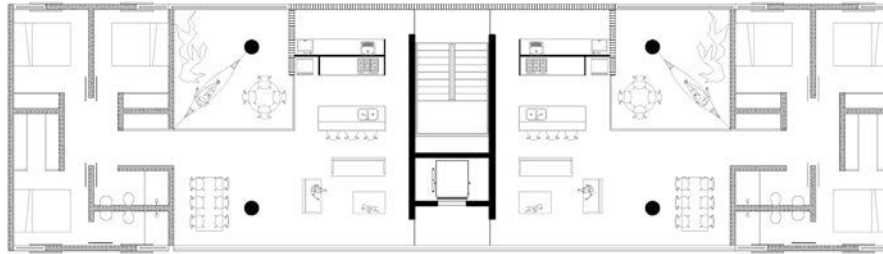
2014 -

Área do terreno

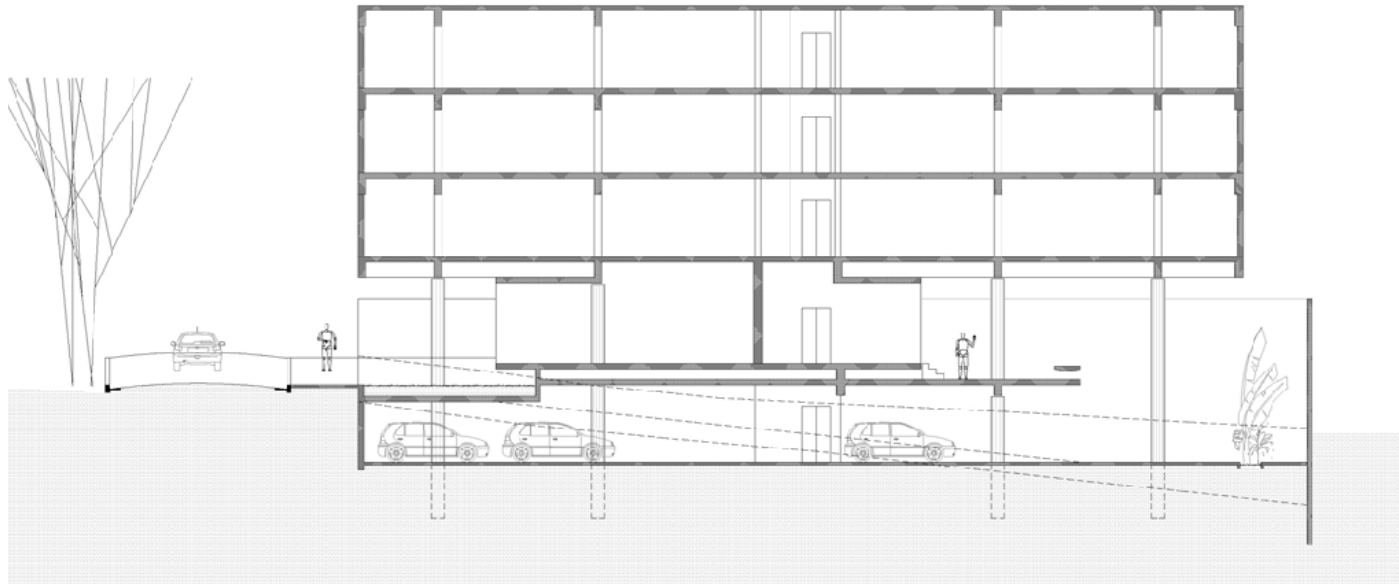
686 m²

Área construída

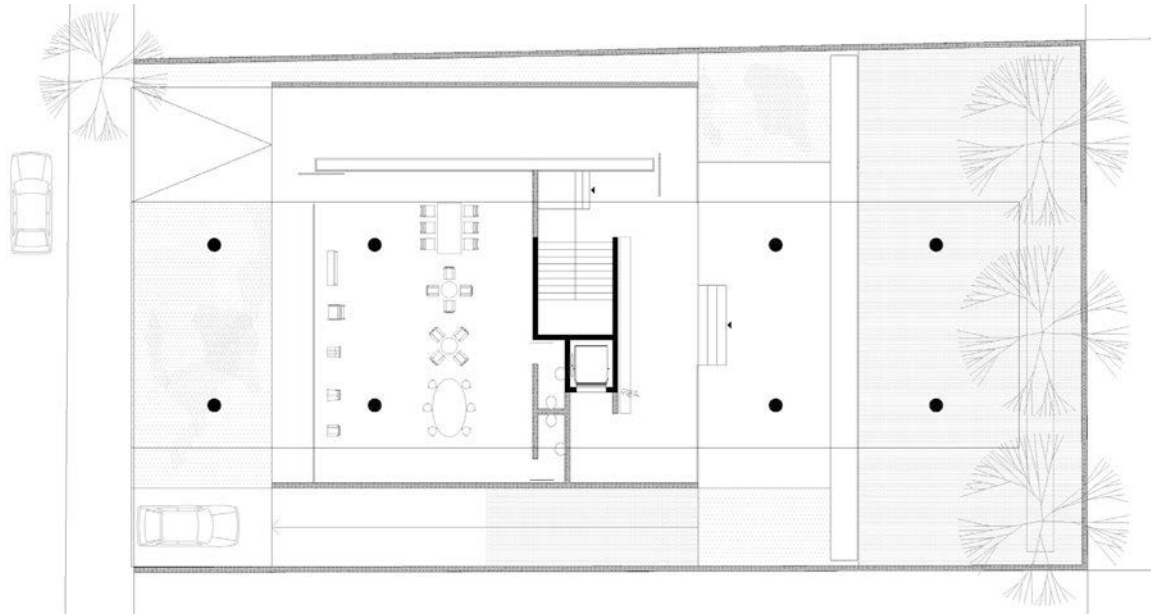
1.350 m²



planta

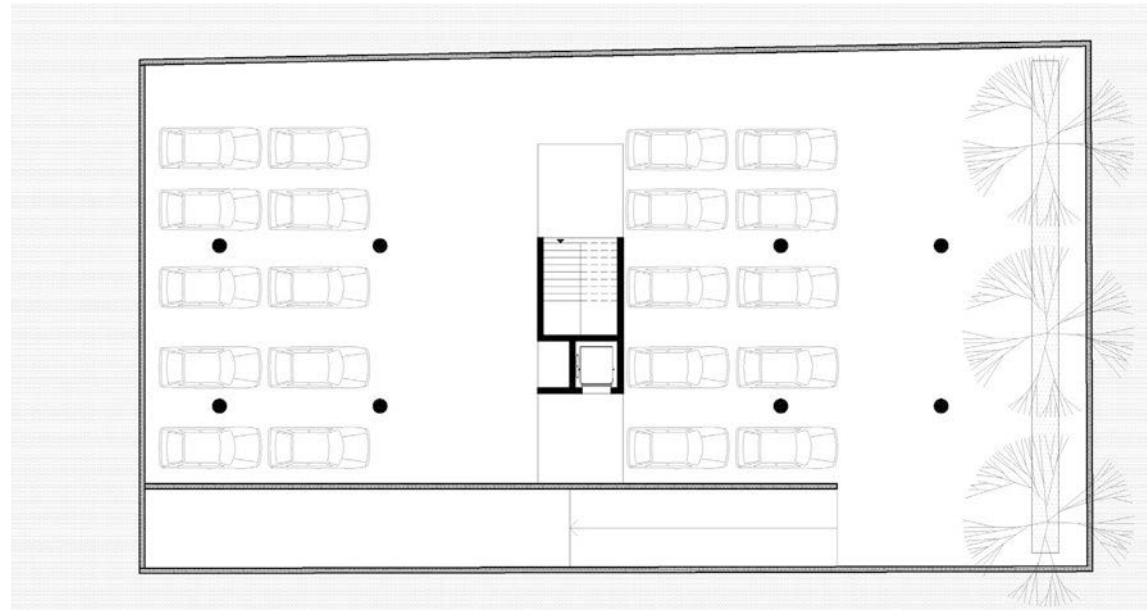


corte longitudinal



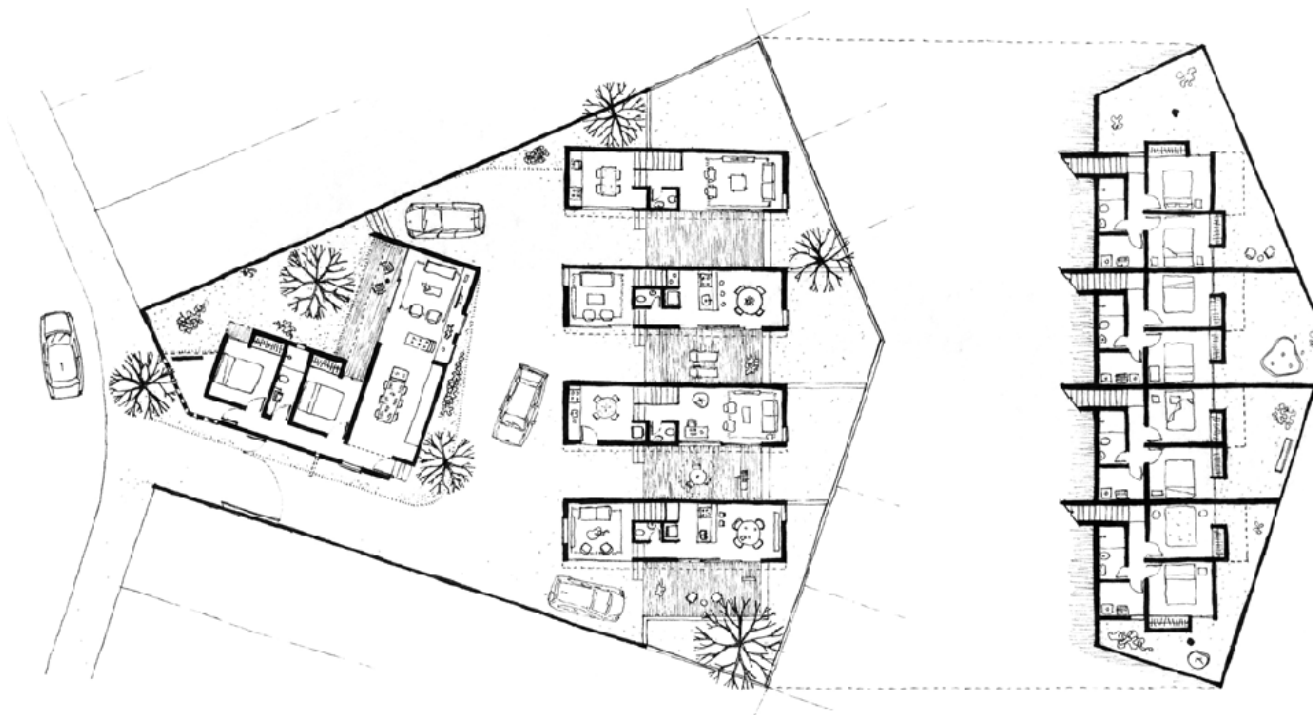
planta térreo





planta subsolo





planta térreo

planta inferior

Conjunto Habitacional Bolívar

Local

Jaguariúna, SP - Brasil

Ano

2013

Área do terreno

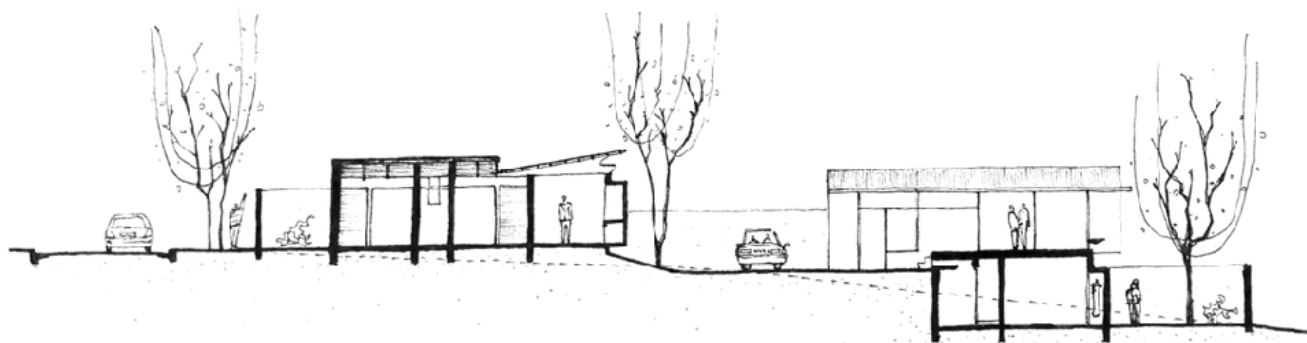
643 m²

Área construída

350 m²

Coautoria

Alexandre Correa Kissajikian



corte longitudinal

Território e Transposição

Local

Jaguaré, SP - Brasil

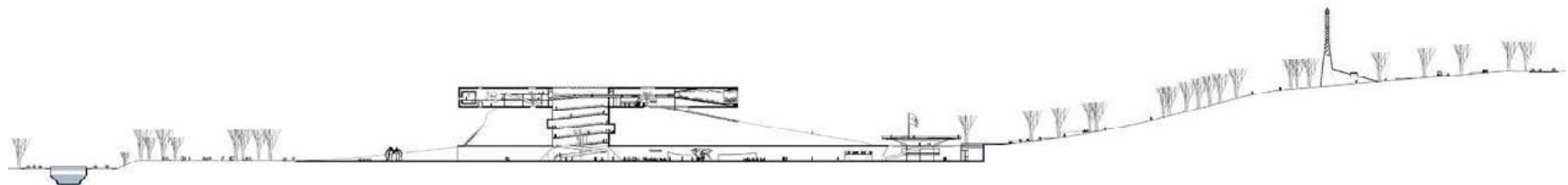
Ano

2011 -

Área construída

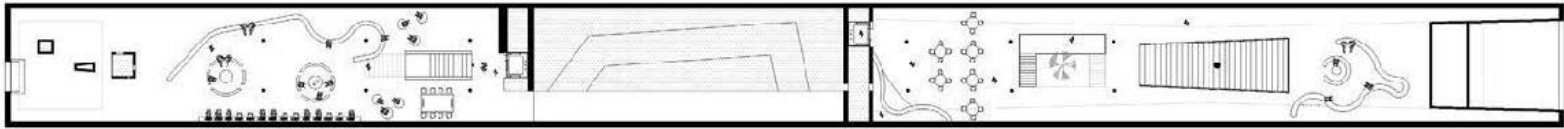
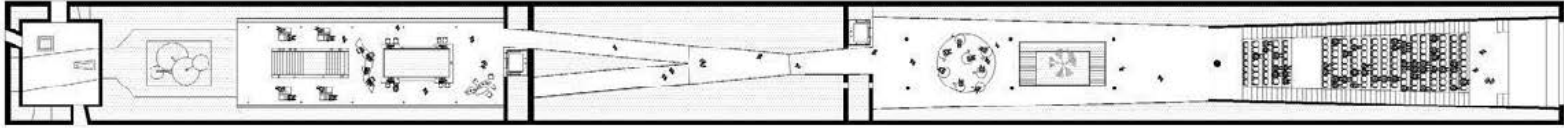
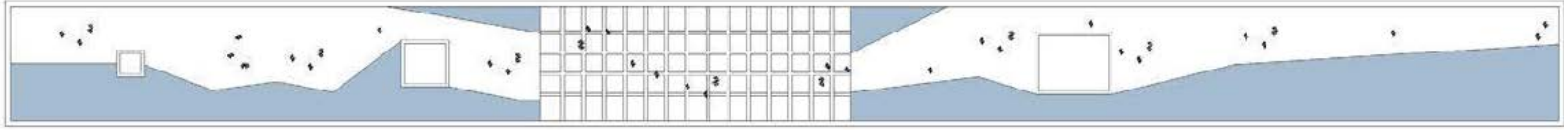
10.000 m²



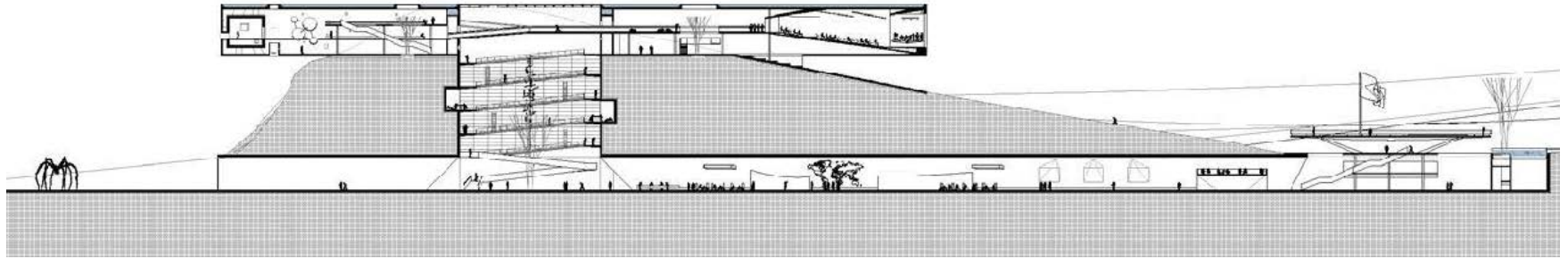


corte urbano

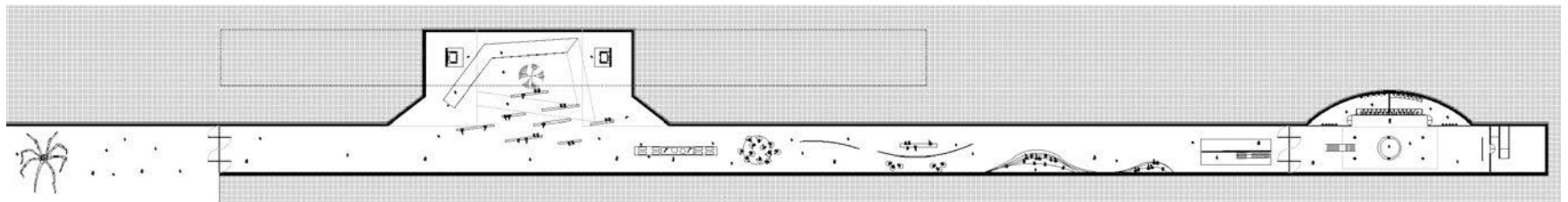




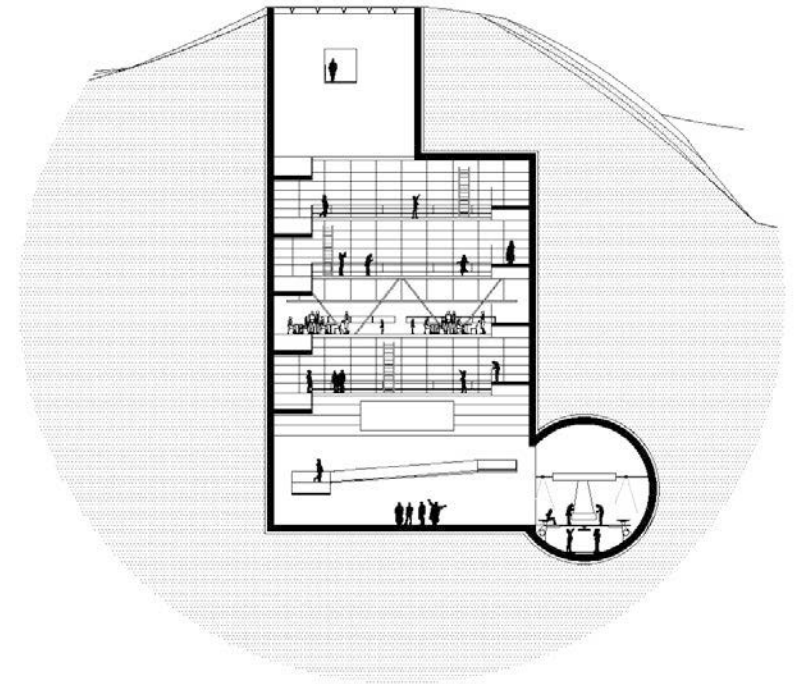
plantas da lâmina



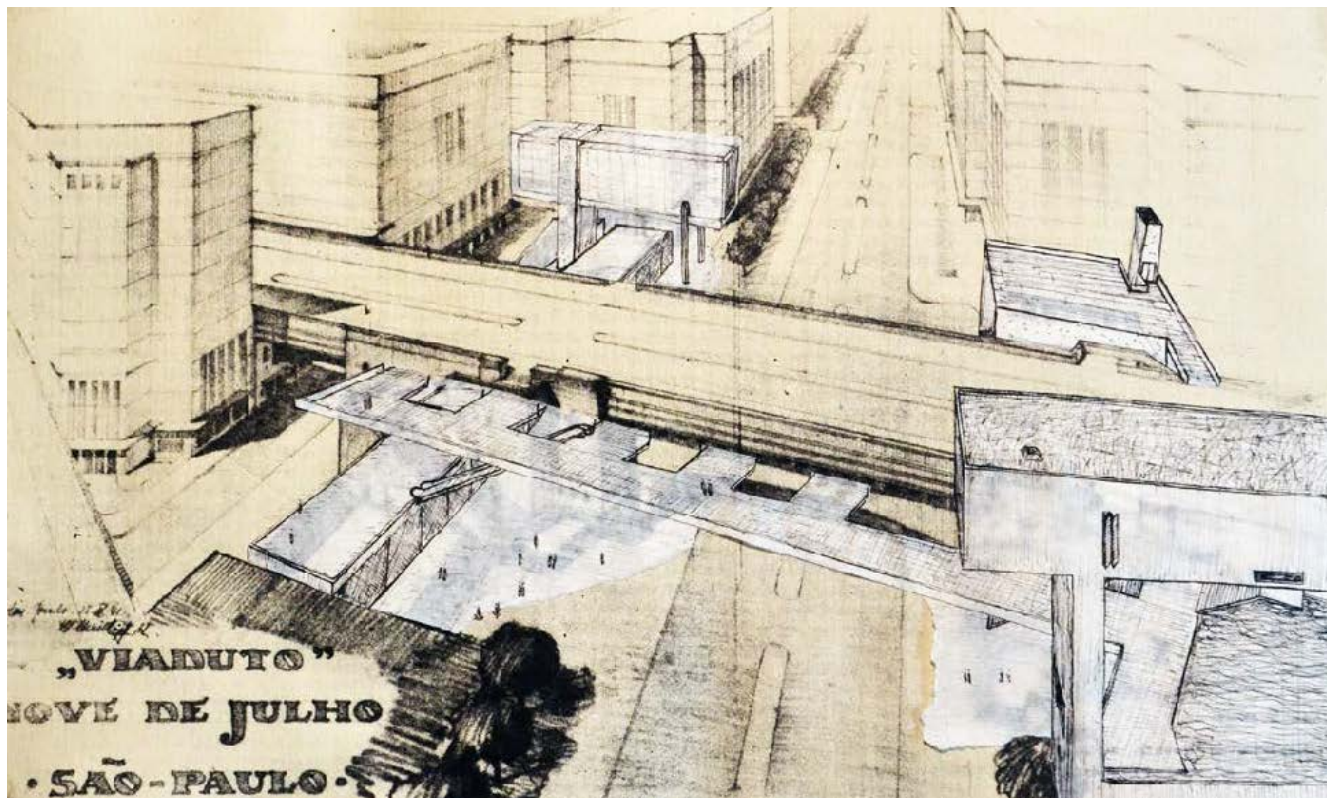
corte longitudinal



planta térreo







Arquitetura por Subtração

Local

São Paulo, SP - Brasil

Ano

2012

Área construída

60.000 m²

Prêmios

Vencedor do 24º Concurso
Ópera Prima

Selecionado pela X Bienal de
Arquitetura de São Paulo

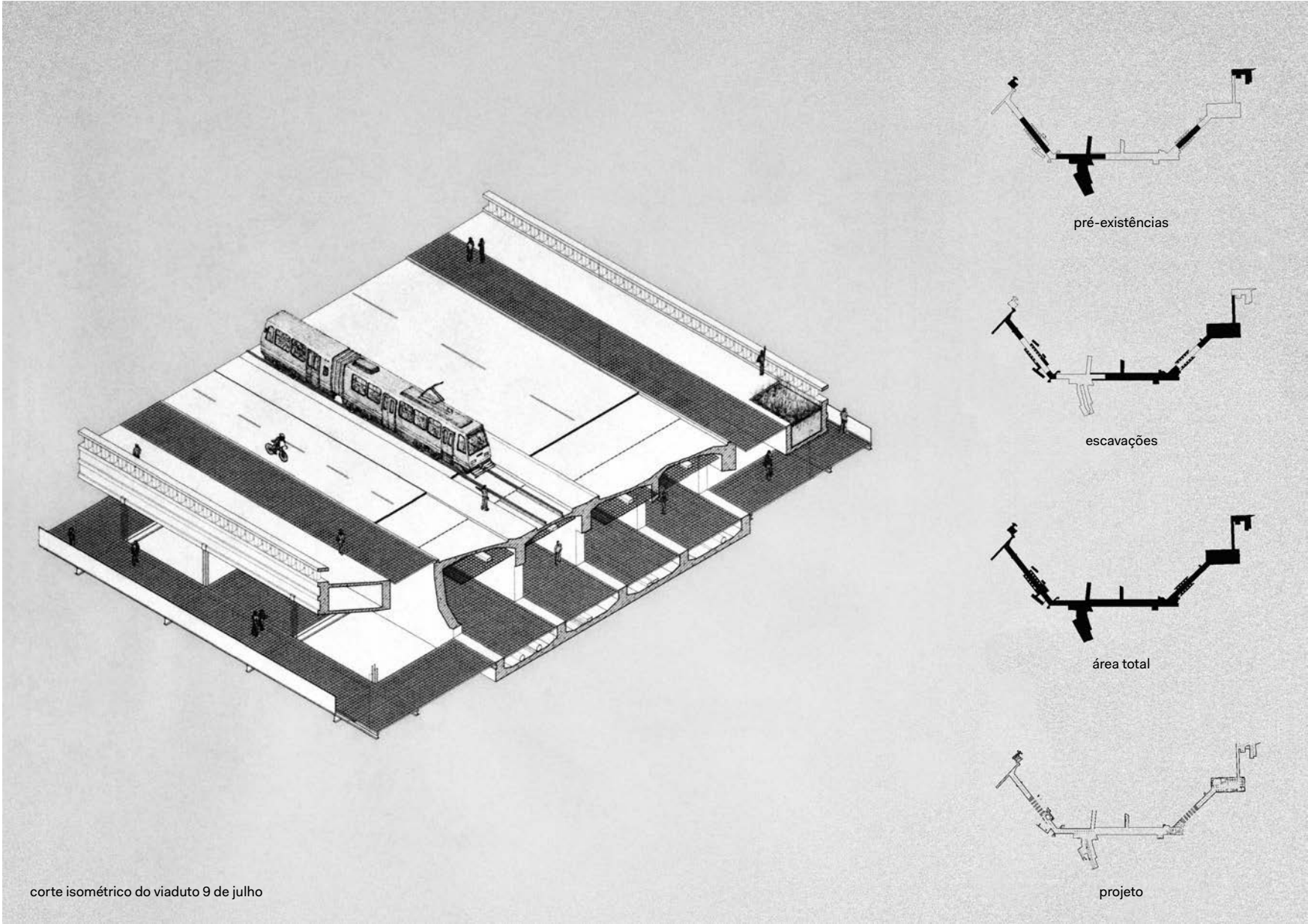


prancha | colagem, grafite e carvão sobre tela

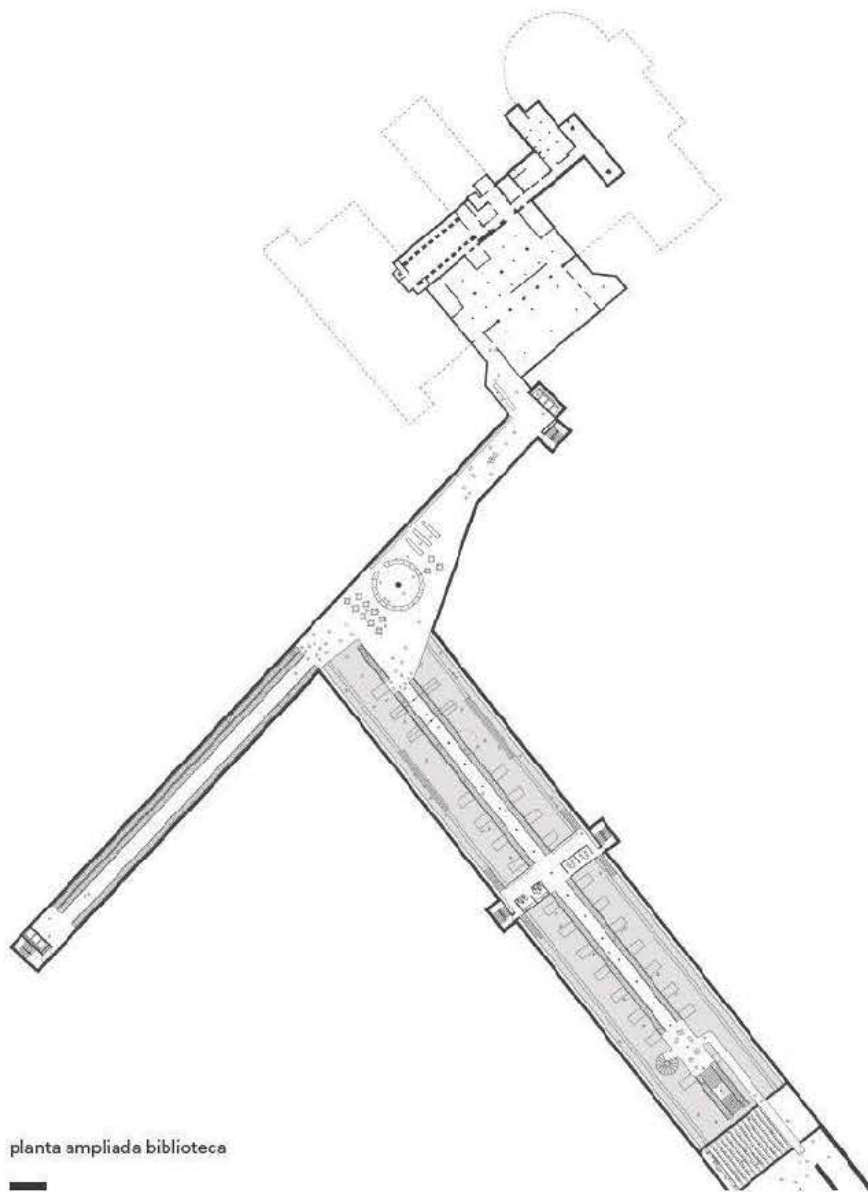


maquete urbana | serigrafia sobre papel kraft e grampos

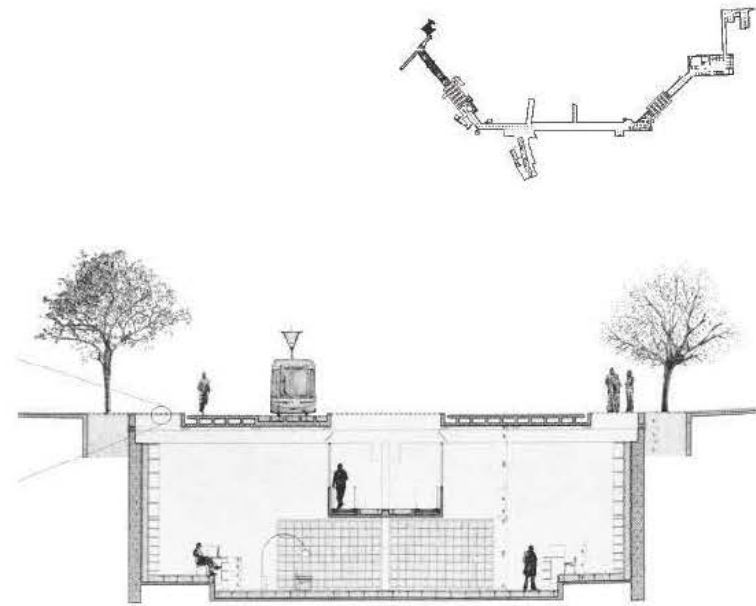




corte isométrico do viaduto 9 de julho

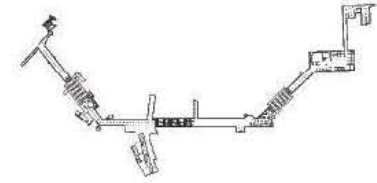
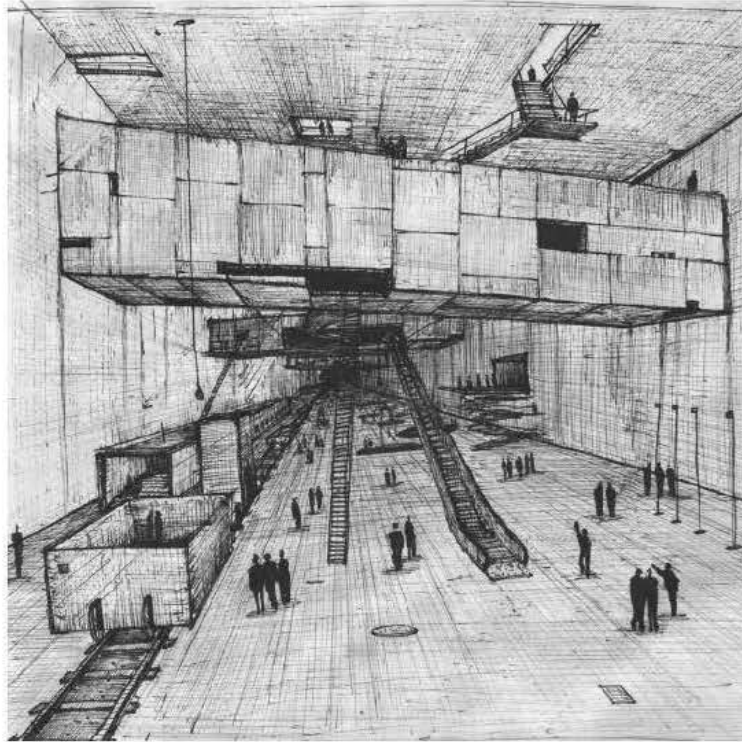


planta ampliada biblioteca

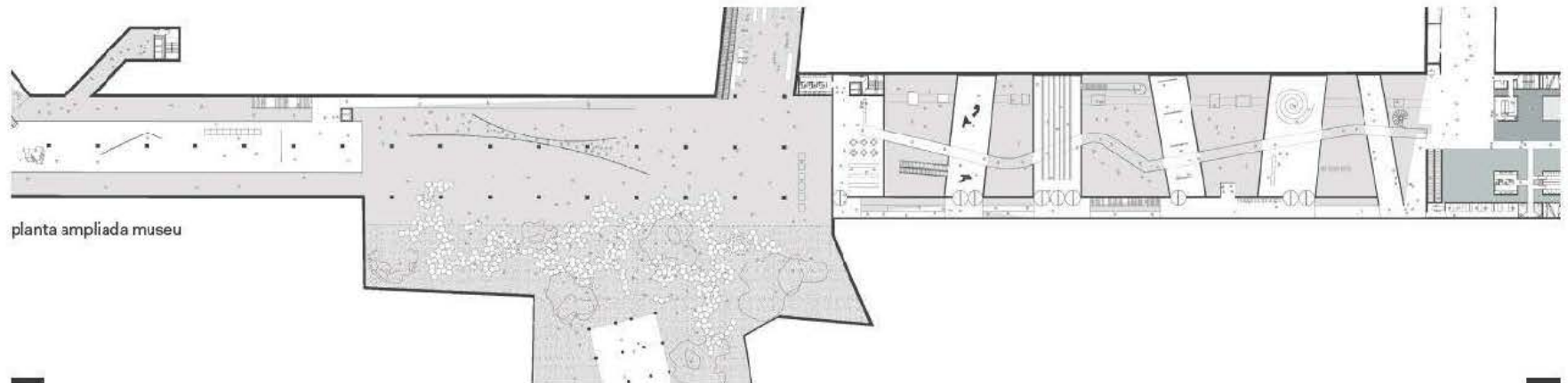


corte transversal biblioteca

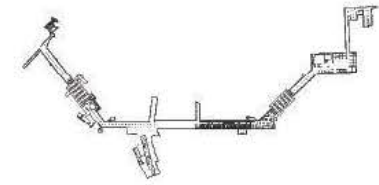
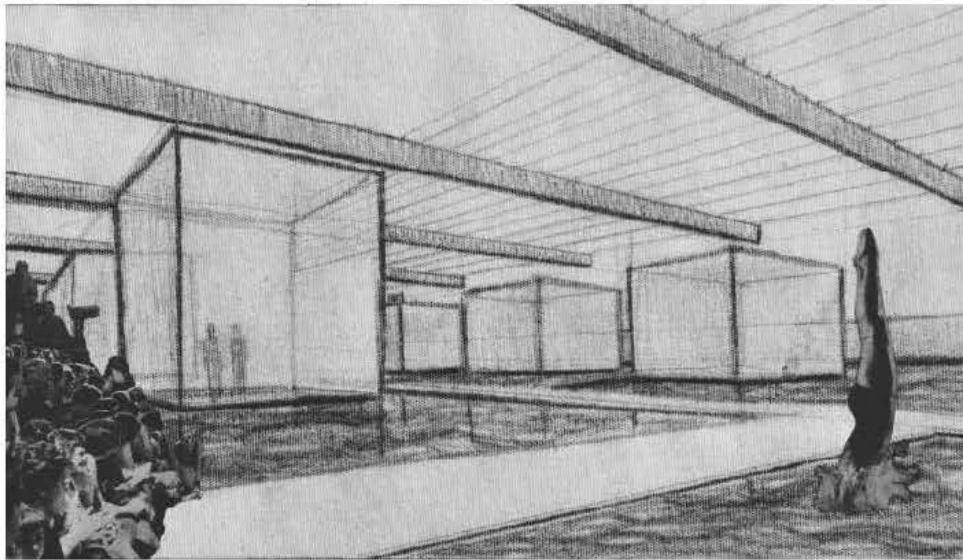




maquete museu | cedro



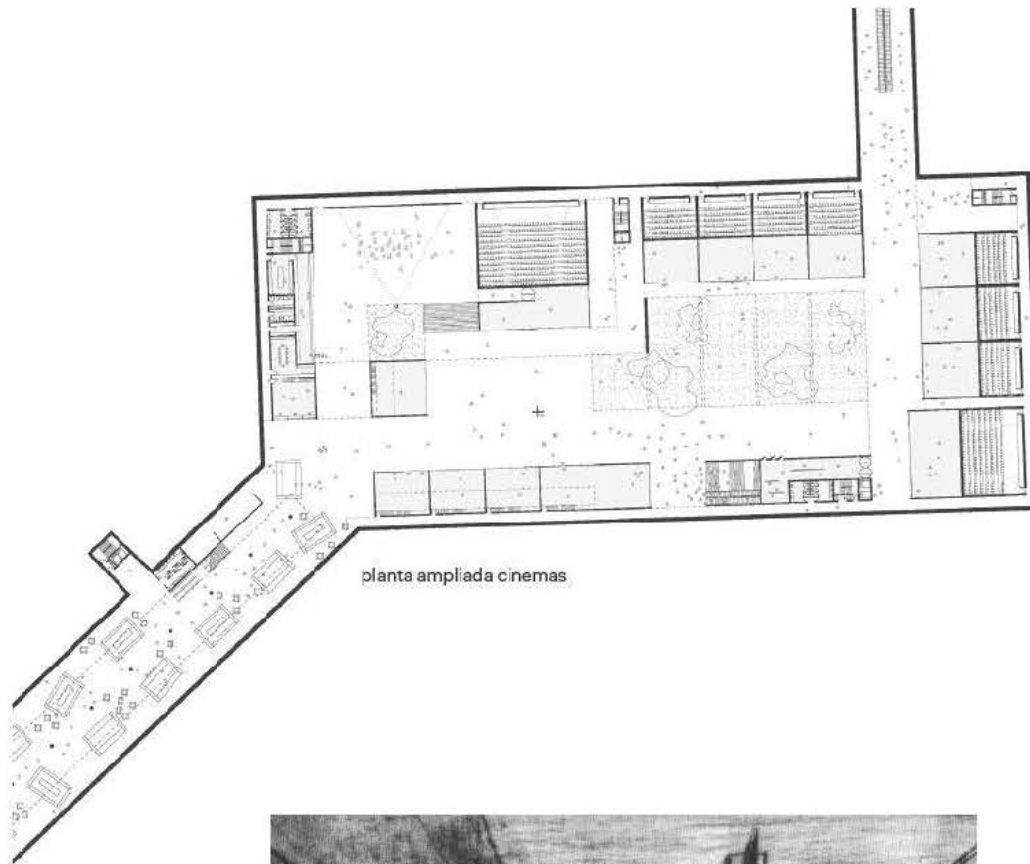
planta ampliada museu



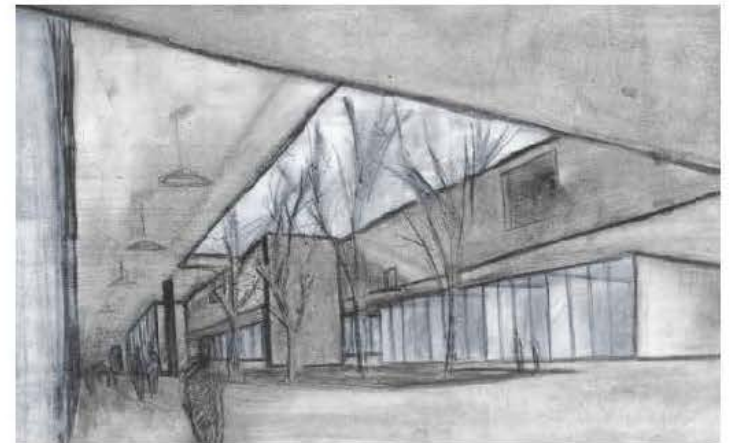
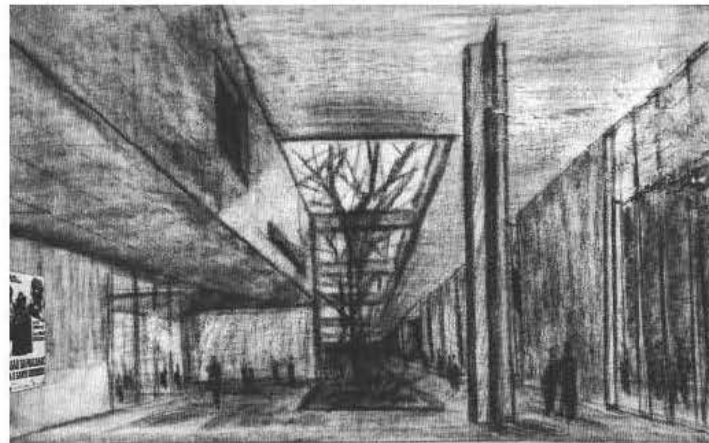
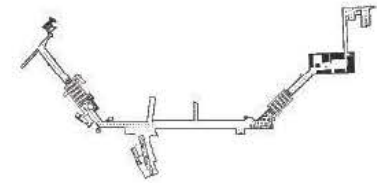
corte perspectivo complexo aquático



planta ampliada complexo aquático



planta ampliada cinemas





Informateca do Gasômetro

Local

São Paulo, SP - Brasil

Ano

2013

Área do terreno

32.138 m²

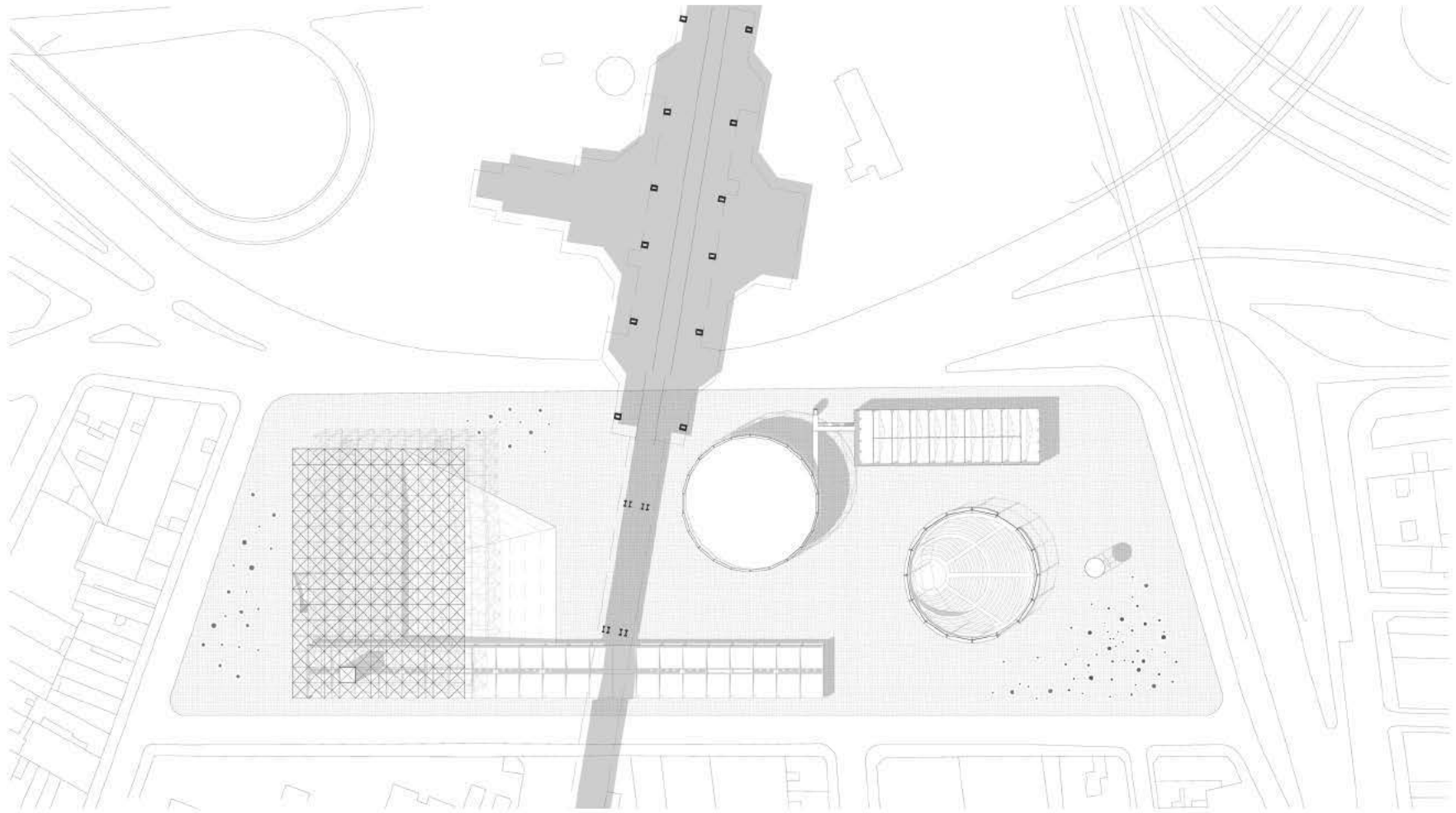
Área construída

22.714 m²

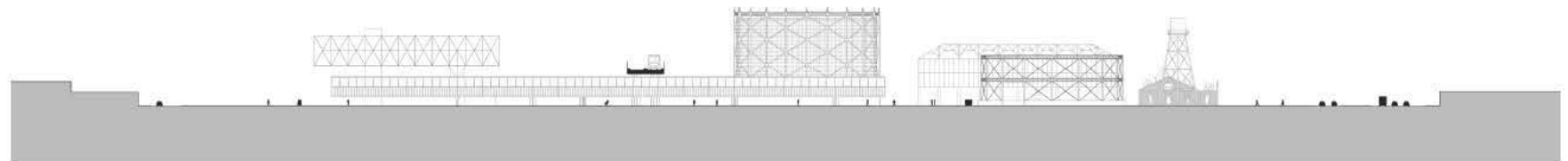
Prêmios

1º Lugar no Concurso Nacional
de Monografias

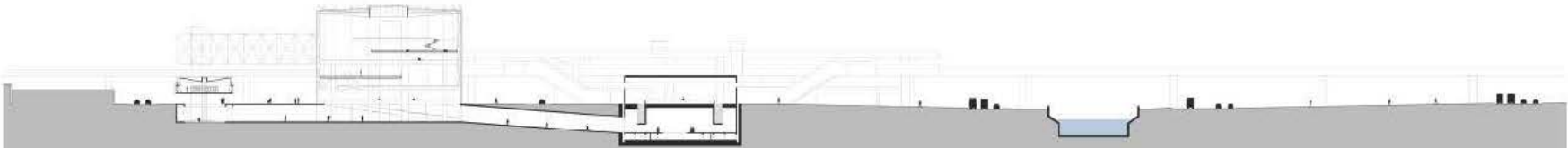
Indicado ao 25º Ópera Prima



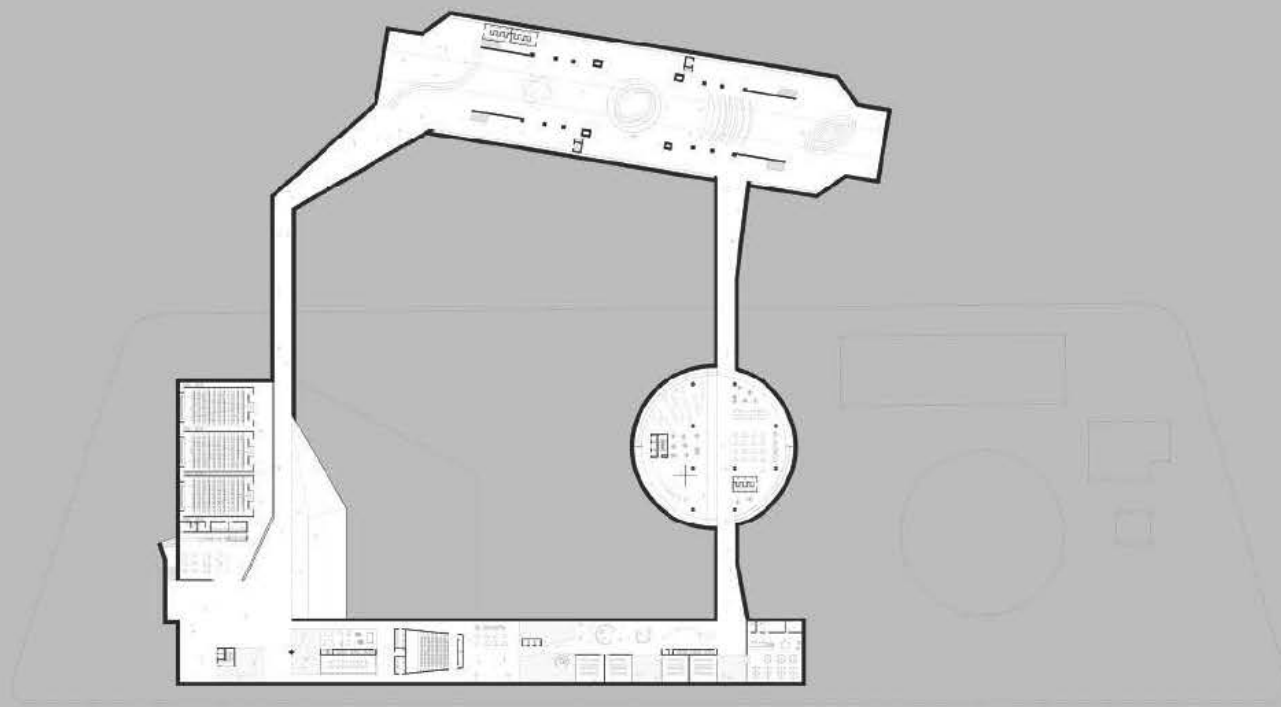
planta térreo



elevação



corte longitudinal



planta do subsolo

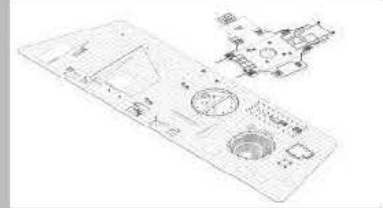
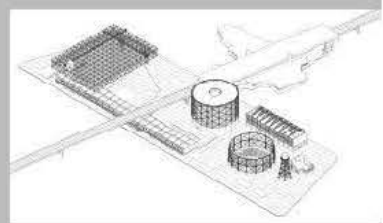
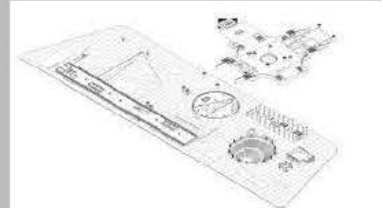
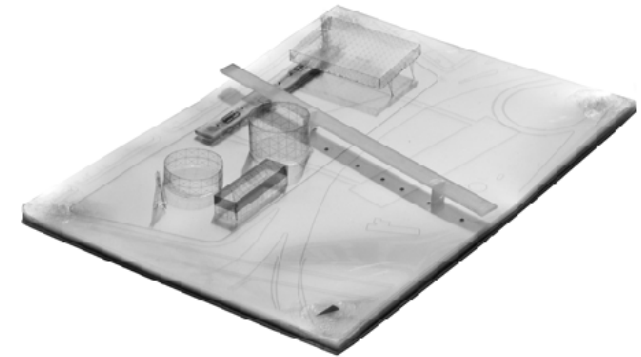


diagrama de níveis

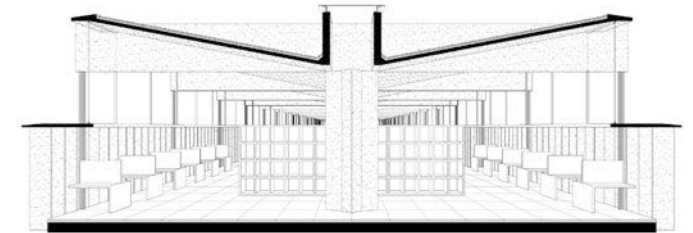


maquete do conjunto | transparências impressas e sobrepostas

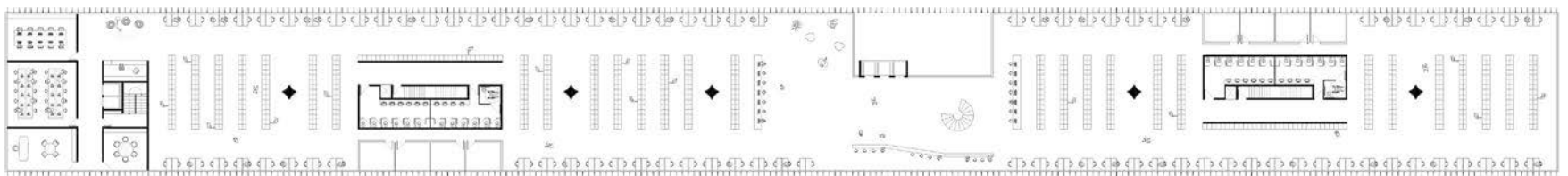




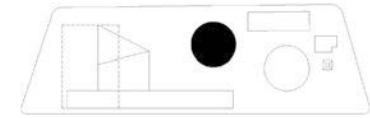
lâmina da biblioteca



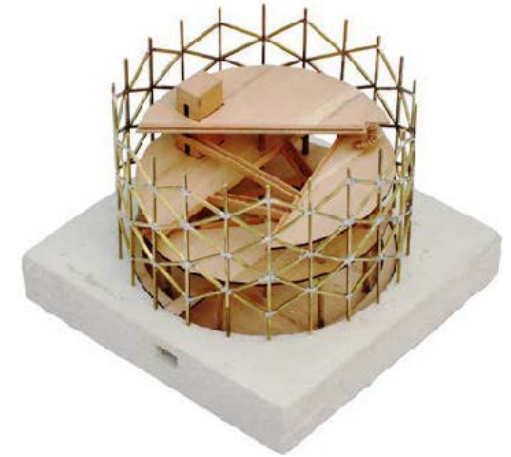
corte transversal



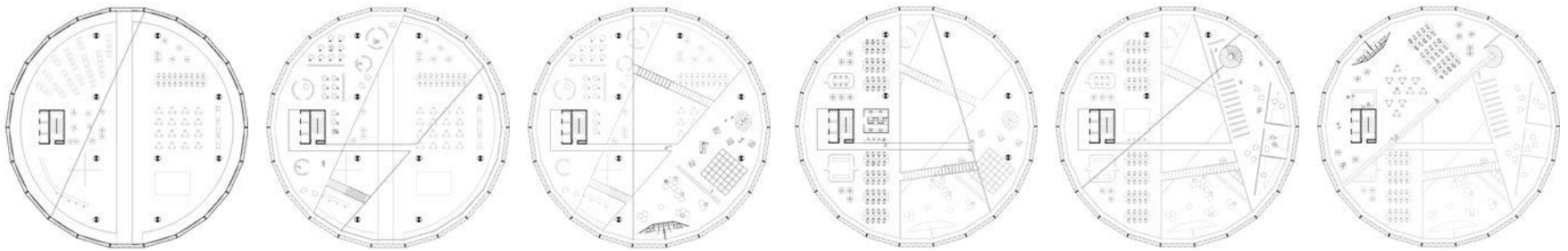
planta biblioteca



mideateca [balão 02]



maquete mideateca | base de concreto, cedro e latão soldado



plantas mideateca

—

—

—

—